

March 10, 2025

48 Livermore Road Large House Review (LHR)

Town Of Wellesley

To whom it may concern,

I, Kray A. Small, Massachusetts Certified Arborist, License # 1797, have been retained by Kent Duckham, to develop a tree protection plan for large house review, located at Livermore Road, in Wellesley, MA. The property is zoned SRD 20.

All trees 6 inches and larger have located and numbered on engineers print **Job #3176**; provided by Jillson Company Inc., P.O. Box 2135, Framingham, MA, 01703.

48 Livermore Road has 12 trees 6 inches and greater and are discussed as follows:

1. ***Quercus alba*** (White Oak) this tree is in good condition/health. DBH was measured 4'6" from grade.
 DBH: 9"
 CRZ: 13' **PROTECTED TREE (See Mitigation Plan)**
 Height: 40'
 Health: Good
 Drip Line: 8'
 The CRZ of this plant will not be protected; the tree is outside the scope of construction.
2. ***Prunus serotina*** (American Black Cherry) this tree is in poor condition/health. DBH was measured 4'6" from grade.
 DBH: Under 6"
 CRZ:
 Height:
 Health: Poor
 Drip Line:
 The CRZ of this plant will not be protected; the tree is outside the scope of construction.
3. ***Acer platanoides*** (Norway Maple) this tree is in good condition/health. DBH as measured 4'6" from grade. DBH as measured 4'6" from grade.
 DBH: 13"
 CRZ: 19' **PROTECTED TREE (See Mitigation Plan)**
 Height: 50'
 Health: Good
 Drip Line: 15'
 The CRZ of this plant will not be protected; the tree is outside the scope of construction.

4. ***Quercus alba*** (White Oak) this tree is in good condition/health. DBH was measured 4'6" from grade.
DBH: 31"
CRZ: 46' PROTECTED TREE (See Mitigation Plan)
Height: 70'
Health: Good
Drip Line: 30'
The CRZ of this plant will not be protected; the tree is outside the scope of construction.
5. ***Tsuga canadensis*** (Canadian Hemlock) this tree is in fair condition/health. This tree has canopy loss due to insects Hemlock Woolly Adelgid and Elongated Hemlock Scale DBH was measured 4'6" from grade.
DBH: 20"
CRZ: 30' PROTECTED TREE (See Mitigation Plan)
Height: 65'
Health: Fair
Drip Line: 12'
The CRZ of this plant will not be protected.
6. ***Tsuga canadensis*** (Canadian Hemlock) this tree is in fair condition/health. This tree has canopy loss due to insects Hemlock Woolly Adelgid and Elongated Hemlock Scale. The tree is comprised of 2 co-dominant leaders. DBH was measured 4'6" from grade.
DBH: 15"
CRZ: 22' PROTECTED TREE (See Mitigation Plan)
Height: 50'
Health: Fair
Drip Line: 12'
The CRZ of this plant will not be protected.
7. ***Tsuga canadensis*** (Canadian Hemlock) this tree is in fair condition/health. This tree has canopy loss due to insects Hemlock Woolly Adelgid and Elongated Hemlock Scale. The tree is comprised of 2 co-dominant leaders. DBH was measured 4'6" from grade.
DBH: L1-11" L2-8"
CRZ: 42' PROTECTED TREE (See Mitigation Plan)
Height: 50'
Health: Fair
Drip Line: 10'
The CRZ of this plant will not be protected.
8. ***Quercus alba*** (White Oak) this tree is in good condition/health. DBH was measured 4'6" from grade.
DBH: 35"
CRZ: 52' PROTECTED TREE (See Mitigation Plan)
Height: 65'

Health: Good

Drip Line: 40'

The CRZ of this plant will not be protected; the tree is outside the scope of construction.

9. ***Quercus alba*** (White Oak) this tree is in good condition/health. DBH was measured 4'6" from grade.

DBH: 27"

CRZ: 40' PROTECTED TREE (See Mitigation Plan)

Height: 70'

Health: Good

Drip Line: 24'

The CRZ of this plant will not be protected; the tree is outside the scope of construction.

10. ***Acer platanoides*** (Norway Maple) this tree is in dead snag condition/health. DBH was measured 4'6" from grade.

DBH: 30"

CRZ: 0' (Planned Removal) PROTECTED TREE (See Mitigation Plan)

Height: 6'

Health: Dead

Drip Line: 0'

The CRZ of this plant will not be protected; the tree is outside the scope of construction.

11. ***Quercus rubra*** (Red Oak) this tree is in good condition/health. DBH was measured 4'6" from grade.

DBH: 47" Off Locus

CRZ: 70' PROTECTED TREE (See Mitigation Plan)

Height: 65'

Health: Good

Drip Line: 24'

The CRZ of this plant will not be protected; the tree is outside the scope of construction.

12. ***Quercus rubra*** (Red Oak) this tree is in good condition/health. DBH was measured 4'6" from grade.

DBH: 38" Town Tree

CRZ: 57' PROTECTED TREE (See Mitigation Plan)

Height: 40'

Health: Good

Drip Line: 30'

The CRZ of this plant will not be protected; the tree is outside the scope of construction.

13. ***Quercus rubra*** (Red Oak) this tree is in good condition/health. DBH was measured 4'6" from grade.

DBH: 44" Town Tree

CRZ: 66' PROTECTED TREE (See Mitigation Plan)

Height: 75'

Health: Good

Drip Line: 30'

The CRZ of this plant will not be protected; the tree is outside the scope of construction.

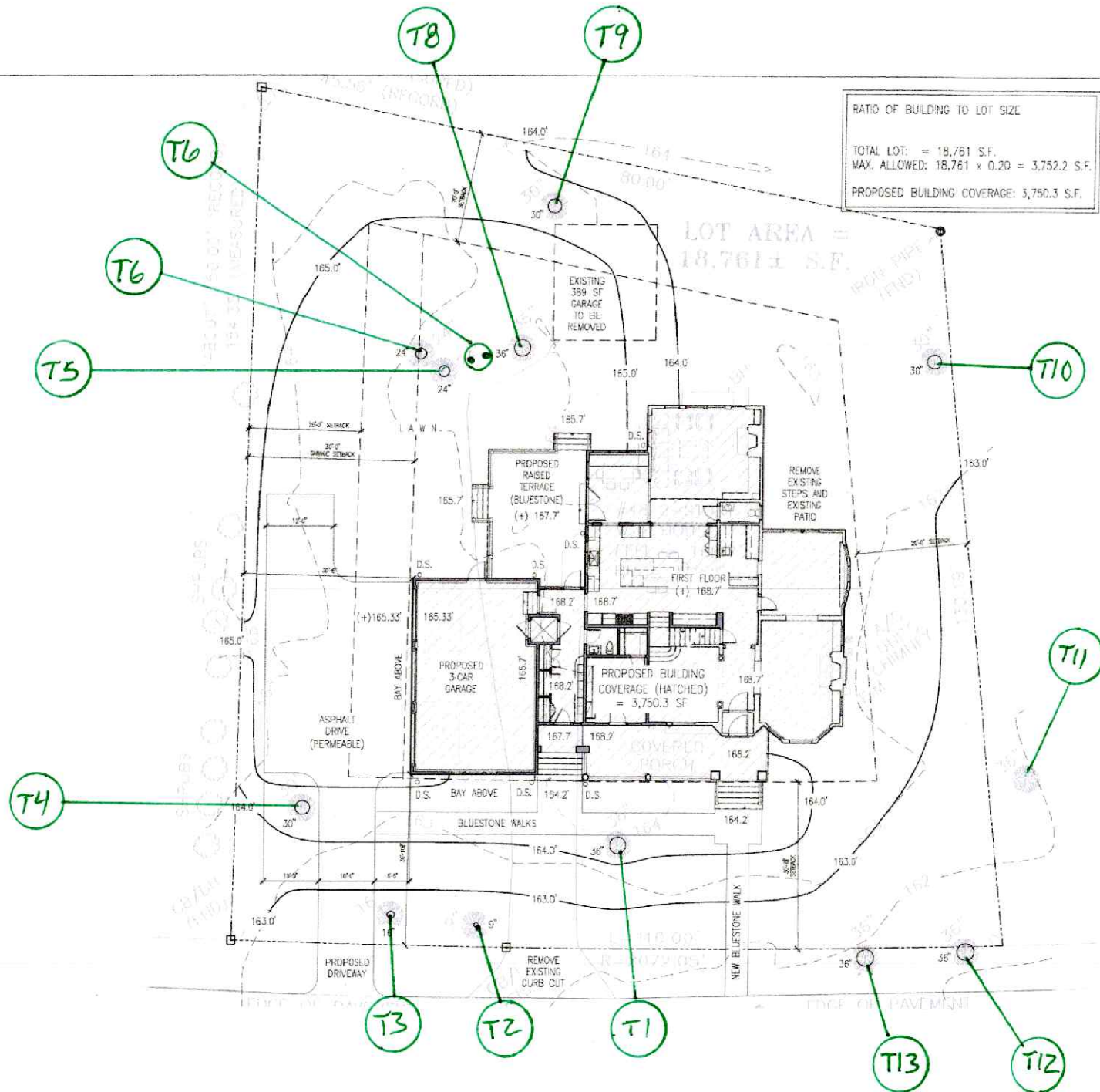
Mitigation Plan of protected trees within the tree yard:

Planned Removals of protected trees:

If any questions arise, I may be reached by telephone at 508-328-4214 and by email ksmall4214@charter.net any other correspondence can be mailed to Kray Small P.O. Box 163, Woodville, MA 01784.

Respectively Submitted,

Kray A. Small, Massachusetts Certified Arborist #1797



DUCKHAM
 ARCHITECTURE & INTERIOR DESIGN

88 Central Avenue
 Needham, MA 02494
 Telephone: 781-448-4129

www.duckham.com
 Architecture & Interior Design

DESIGN PROGRESS
 JANUARY 29, 2025

Issues
 Number Date Description

Revisions
 Number Date Description

Checked by:
 Drawn by:

Hawkey Residence
 48 Livermore Road
 Wellesley, MA

ARCHITECTURAL SITE PLAN
 TREE SURVEY