



WINTER MAINTENANCE

Wellesley's Department of Public Works maintains over 110 miles of roads and 32 parking lots, working around the clock with the Wellesley Police to monitor conditions and respond to storms. Crews treat steep and high-traffic roads during the first 2–3 inches of snow, with full plowing typically starting at 3 inches. Plowing decisions vary based on snow type and forecast to protect roads and conserve resources. After storms, it takes 3–4 hours to clear intersections—we appreciate your patience.

The Town also plows 55 miles of

sidewalks along designated routes, commuter rail stations, and commercial areas. View the townwide sidewalk plow route map or the sidewalk plow mapbook. Sidewalks are plowed when 2" to 3" of snow has fallen. During severe winter weather, the department prioritizes commercial areas and heavily traveled roads. After snowfall ends, it takes 12 to 72 hours to clear all sidewalks, depending on storm conditions. In extreme icing, the department treats sidewalks near schools, stations, and steep areas with salt and sand, and asks residents to assist by treating sidewalks along their property when possible.

Residents using private contractors must ensure snow isn't pushed into streets, sidewalks, or onto fire hydrants to avoid creating safety hazards. To learn more, visit our [winter operations page](#).



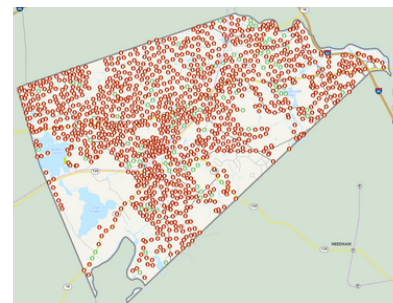
DPW crews work around the clock to keep Wellesley moving during winter storms

INSIDE THIS ISSUE

Winter Maintenance	1
Adopt a Hydrant	1
Sewer FOG Outreach Program	1
Holiday Waste Guide	2
Hunnewell Sports Court	2
Skip the Stuff	2
Holiday Lights	3
Overnight Street Parking	3
RDF App	3
Water Customer Portal	3
RDF News	3
Avoid Winter Plow Damage	4
Upcoming Closures	4
Connect with us	4

ADOPT A HYDRANT

The DPW and Fire Department ask for your help to clear snow from fire hydrants this winter. There are over 1,400 hydrants in town, and each one is vital in an emergency. Use the Adopt a Hydrant map to claim one near you, then clear it regularly. Together we can keep our neighborhoods safe. To learn more, visit the ["Adopt A Wellesley Fire Hydrant" page](#).



SEWER FOG OUTREACH PROGRAM

When fats, oils, and grease (FOG) from cooking make their way down kitchen drains, these materials cool and harden, sticking to the inside of pipes and creating blockages that can lead to costly backups and sewer overflows. We're distributing reusable "Can Your Grease" lids to help residents collect cooking grease safely and easily. To learn more, visit the [Sewer FOG Outreach Program page](#).





HOLIDAY WASTE GUIDE

This season, let sustainability be part of your celebration. Our Holiday Waste Reduction Guide offers easy, actionable ways to reduce waste—from thoughtful gift-giving to smart disposal of decorations and food. It's a simple way to spread cheer without leaving a trail of trash behind. After the celebrations, it's time to sort smart. Here's a quick guide to what goes in your recycling bin and what doesn't:

Recyclable: Clean cardboard, mixed paper, electronics, batteries, and holiday lights (in the copper container at the metals area).

Not recyclable: Wrapping paper, styrofoam, and food-soiled packaging.

Recyclable wrapping paper must be free of non-paper additives like glitter, metals, or plastics. To test if wrapping paper is recyclable, try the scrunch test: scrunch a piece of wrapping paper, and if it stays scrunched up, it is likely safe to recycle. To learn more, visit the [RDF recycling page](#).

HUNNEWELL SPORTS COURTS

The project has reached substantial completion, and the courts are now ready for use. Recent work included the installation of fencing and gates around the courts, final paving of the parking lot, and pavement markings. We will continue



working with our contractor, M.J. Cataldo, to complete a short punch list of remaining items this month, including installation of the bounce wall, placement of the pickleball net on the rear court, and installation of signage on the fence. We thank you for your patience throughout the project and hope you enjoy the new courts! To learn more, visit the [Hunnewell Sport Courts Restoration Project page](#).

SKIP THE STUFF

COMING
SOON

Wellesley's new Skip the Stuff bylaw takes effect on January 1, 2026. Restaurants will provide single-use articles (e.g., plastic forks, napkins, and single-serving packaged condiments) only upon request or at self-service counters. Help us reduce waste and unnecessary costs for restaurants. Need a single-use item? Please ask when ordering. To learn more, visit the ["Skip the Stuff" page](#).



Greener Holiday Decorations

- Use LED holiday lights that consume 1/50th of the energy of conventional lights.
- Recycle your tree, wreaths, and décor.
- Try using a potted tree that can be replanted.



INFORMATION - PHONE NUMBERS

(781) 235-7600

Hours of Operation are Monday to Friday from 7:00 a.m. to 4:00 p.m.

Engineering	ext. 3315
Highway	ext. 3325
Park & Tree	ext. 3335
RDF	ext. 3345
Water & Sewer	ext. 3355
Director's Office	ext. 3305

EMERGENCY NUMBERS

HIGHWAY DPW

(For emergencies after 4:00 p.m.)

781-235-7600 ext. 3322

TO REPORT A POWER OUTAGE TO THE MLP

781-235-7600 ext. 3390





Town of Wellesley

Winter 2025 no. 46

Department of Public Works

HOLIDAY LIGHTS

The Department of Public Works is making spirits bright this season! The Park and Tree Division, in cooperation with the Wellesley Municipal Light Plant, spent November decking out dozens of public trees (and a few privately-owned ones) with festive holiday lights throughout town. Residents and visitors can enjoy the twinkling displays through mid January. To learn more, visit the [Holiday Lights page](#).



Meet the crew illuminating Wellesley this holiday season



Click [here](#) to view the Holiday Lights map and find display locations across Wellesley.

OVERNIGHT STREET PARKING



In accordance with Town bylaws, overnight parking on public streets is strictly prohibited. Vehicles obstructing snow plowing operations may be towed at the owner's expense. Additionally, residents are advised not to park in the public way portion of their driveway—the final eight feet nearest the road—as this can hinder snow and sidewalk clearing and place vehicles at risk.

RDF APP

The Wellesley RDF App puts waste management do's and don'ts right at your fingertips, helping you maximize your use of the RDF while keeping trash out of landfills. It's the simplest way to recycle right and reduce your environmental impact.



To learn more, visit
<https://www.wellesleyma.gov/1833>

WATER CUSTOMER PORTAL

The Water Customer Portal helps you track your water usage, identify potential leaks, and find ways to reduce your bill. Sign up to monitor your consumption and receive alerts that can save you money while conserving water.



To learn more, visit
<https://www.wellesleyma.gov/1867>

RDF NEWS

The RDF's Sunday hours ended for the season on November 30th. Starting in December, the facility will be closed on Sundays until spring.

The reusable area will close for the season on Saturday, December 7th, weather permitting. Plan ahead for any last-minute donations or pickups before then.



AVOID WINTER PLOW DAMAGE

As winter approaches, residents are reminded to keep the Town's right of way clear to help ensure safe and efficient plowing. Items such as fences, sports equipment, trees and shrubs, irrigation heads, stonework, steps, and other personal property should not be placed in the public way. Under Town Bylaw 49.2, placing any obstruction in a public way is prohibited, and property owners may be held liable for damage or safety hazards caused by these items.

The Town is not responsible for damage to mailboxes that are in poor condition or installed improperly. If a mailbox located in the right of way is damaged during plowing, the Town will replace it only with a standard wooden post and plastic or metal box. Ornamental mailboxes are placed at the owner's risk.

To help prevent lawn or berm damage, residents are encouraged to install snow stakes to guide plow operators.

If you need to report plow damage, contact the DPW at 781-235-7600 ext. 3325 or dpw@wellesleyma.gov. Lawn repairs begin in mid-April, weather permitting, and are typically completed by mid-May.

NEWS & ANNOUNCEMENTS

Upcoming Closures

DEC 24 THE DPW AND RDF WILL CLOSE AT NOON IN OBSERVANCE OF CHRISTMAS DAY

DEC 25 THE DPW AND RDF WILL BE CLOSED IN OBSERVANCE OF CHRISTMAS DAY

DEC 31 THE DPW AND RDF WILL CLOSE AT NOON OBSERVANCE OF NEW YEARS DAY

JAN 1 THE DPW AND RDF WILL BE CLOSED IN OBSERVANCE OF NEW YEARS DAY

JAN 19 THE DPW AND RDF WILL BE CLOSED IN OBSERVANCE OF MARTIN LUTHER KING JR. DAY

FEB 16 THE DPW AND RDF WILL BE CLOSED IN OBSERVANCE OF PRESIDENT'S DAY

Connect with us for our latest news, updates, and events



TWITTER: @WELLESLEYDPW



BLUESKY: WELLESLEYDPW



INSTAGRAM: DPW.WELLESLEY



FACEBOOK: WELLESLEY DPW



YOUTUBE: WELLESLEY DPW

**All links are available on
<https://linktr.ee/WellesleyDPW>**

**FOR ANY QUESTIONS, PLEASE EMAIL US AT
DPW@WELLESLEYMA.GOV**