

Wellesley Town Hall Points of Interest

FIRST FLOOR & LOWER LEVEL

1. Washington Street Entrance

- New accessible entry with ramp leading to new front doors
- New lighting, heating, and cooling designed for maximum efficiency and comfort
- Clear sight-lines and signs to improve public circulation and wayfinding with all main public functions now on the First Floor
- **Look for!** State Standards historic display

2. Stairway

- Centrally located on South side of building to provide continuous access to all floors
- Exposed original brick allows the building to breathe

3. Town Clerk's Office

- Larger and located in a high traffic area to better serve the public with a glass partition and security gate for safety
- Designed to highlight the historic architectural arch of original Town Hall
- **Look for!** Wellesley Town Charter from 1881

4. Juliani Room

- Reconfigured with the addition of a full glass wall to allow for separation and privacy during public meetings
- New lighting and updated AV/IT technology for in-person, hybrid, and Zoom meetings
- **Look for!** Town Seal carvings above the fireplace

5. West Foyer

- Checkerboard flooring was repaired and repainted to match historic photos
- White paint was removed to expose the original historic brick

6. Town Hall Vault (Lower Level)

- New 6-hour Fire-Rated vault, climate controlled to safely and securely store valuable documents

SECOND FLOOR

7. Touchdown Space & Focus Room

- Work stations for visiting employees / other departments

8. Stair/Elevator

- Easier navigation for split floors between the original Library building and original Town Hall
- Accessible pathway from elevator to the Great Hall

9. Great Hall

- Open, single-level meeting space reconfigured for maximum capacity
- New LED lighting and improved acoustics
- Two refurbished historic circular clocks
- Large conference room added under balcony, with glass wall and door for privacy, that provides visibility to the historic wood trusses
- Balcony contains hidden HVAC systems and Wellesley Media broadcast technology
- Preserved WWI Honor Rolls
- **Look for!** Dragon carvings on ceiling beams

THIRD FLOOR

10. Select Board & Finance Offices

- Open/flexible office space to take advantage of natural light while maintaining the historic Library roof truss construction
- Paint removed to expose original historic brick and refurbished wood trim
- **Look for!** Circular windows, characteristic of Romanesque architecture

BUILDING EXTERIOR

11. Mechanical Systems (East side)

- Modern systems, providing fresh air and a healthy environment
- Air source variable heat pump system that is all electric and fossil fuel free to meet the Town's Sustainable Building Guidelines
- New landscaping that uses plants and permeable material to allow for natural water collection and control stormwater run off

12. West Parking Lot

- Accessible and appropriately graded ramp to Lower Level entrance
- EV charging stations
- **Look for!** The "W" shapes in the stair railings

Please take a cookie on your way out!



WELLESLEY TOWN HALL

RIBBON

Cutting

SPEAKERS

Tom Ulfelder - Wellesley Select Board
Michael Tauer - Chair, Permanent Building Committee

PROJECT TEAM

Wellesley Select Board

Colette Aufranc
Marjorie Freiman
Ann-Mara Lanza
Lise Olney
Tom Ulfelder
Beth Sullivan Woods

Executive Director

Meghan Jop

Permanent Building Committee (PBC)

Tom Goemaat
David Grissino
Matt King
Jose Soliva
Michael Tauer

Wellesley Facilities Management Department

Dick Elliott
Steve Gagosian
Joe McDonough
Abbie Miller-LaFrancesca
Glenn Remick
Lucy Yen

Schwartz-Silver Architects

Consigli Construction

Photographer

Beth Shedd

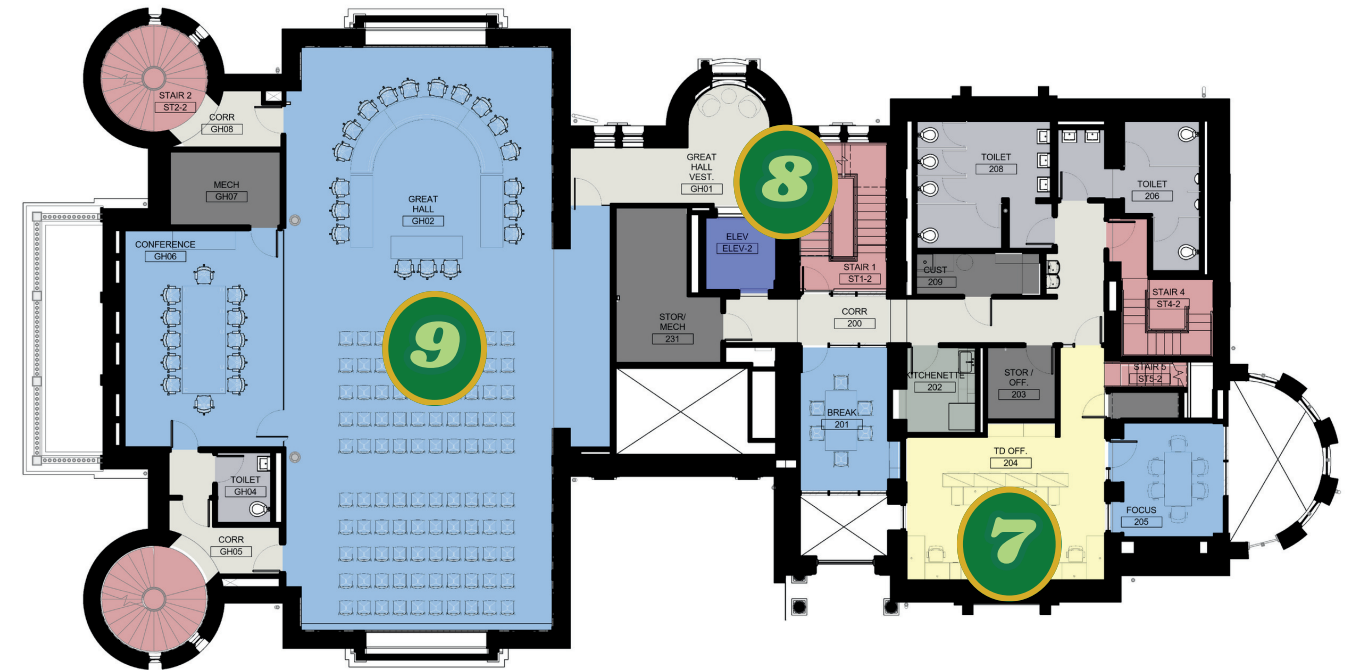
*Thank you for joining us to celebrate the renovated Wellesley Town Hall.
We are grateful to everyone who helped make this project possible.*

Wellesley Town Hall Floor Plans

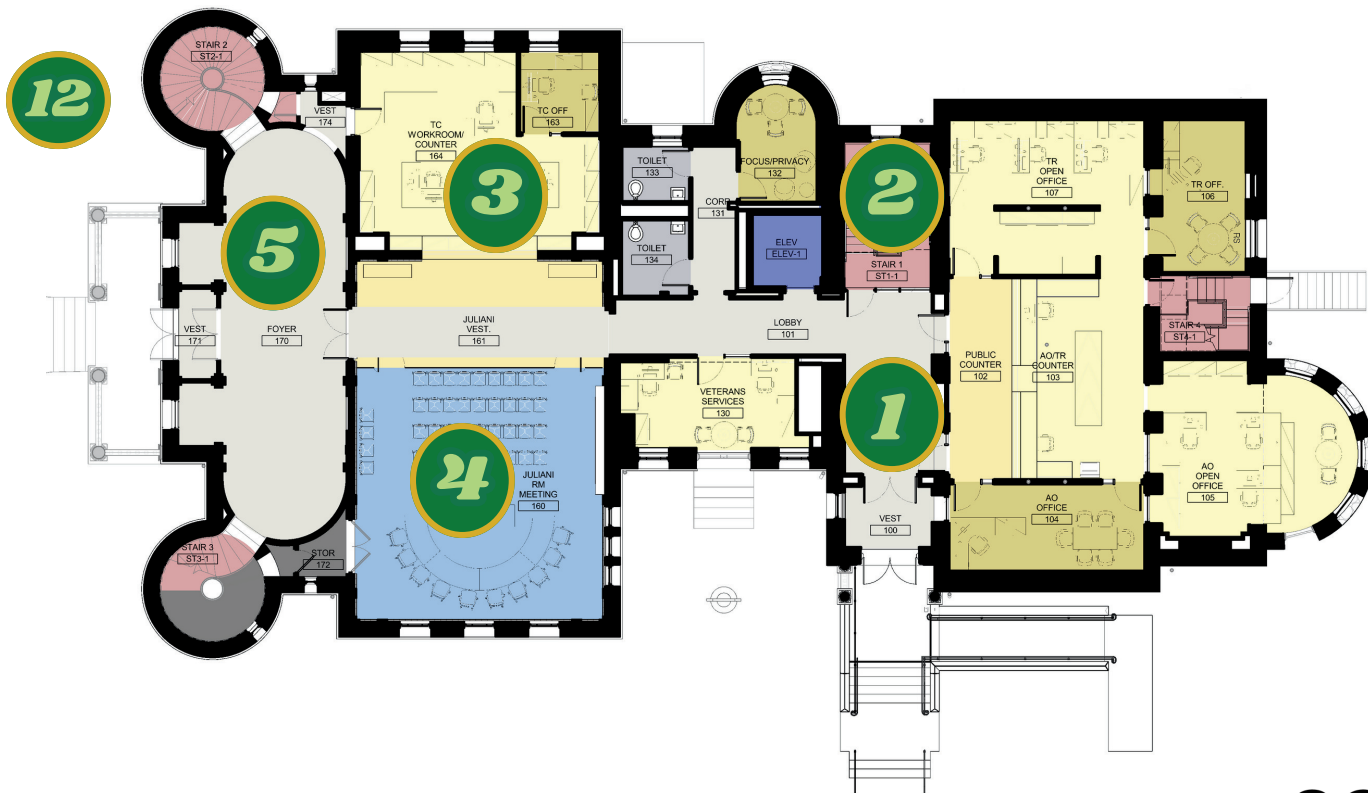
LEVEL 0 ↓



↓ LEVEL 2



LEVEL 1 ↓



↓ LEVEL 3



schwartzsilver

see back for points of interest

