



DEDICATED TO EXCELLENCE

781-235-7600

www.wellesleyma.gov/mlp

wmlp@wellesleyma.gov

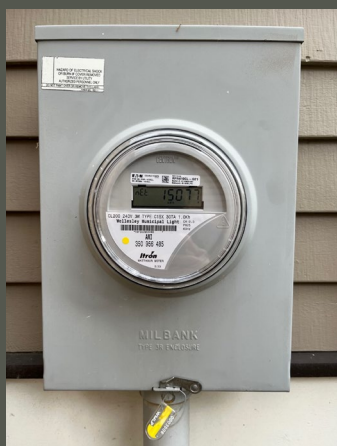


May 2025

ELECTRIC METER UPGRADE PROJECT

In a continuing effort to improve our electric service to you, the WMLP is nearing completion of its electric metering system upgrade project. This upgrade includes installation of a new AMI (Advanced Meter Infrastructure) electric meter at your home or business. Through a web and mobile phone application, customers will be able to monitor and manage their electric usage and receive outage alerts.

If we have contacted you to upgrade your meter, please call us back to schedule a short appointment.



New residential AMI meter. Meter seals or padlocks are not to be tampered with.

DID YOU KNOW THAT THE WMLP PROVIDES OUR COMMUNITY WITH COMPETITIVELY PRICED AND CLEAN ELECTRIC POWER?

\$ Wellesley residents save approximately \$250 per month compared to neighboring communities (based on 1,500 kWh usage):

- Needham, Newton, Natick, Weston (Eversource): \$0.325 per kWh
- Wellesley (WMLP): \$0.160 per kWh

⚡ 70% of the electric power we bring to you is supplied from non-carbon emitting sources (solar, wind, hydroelectric, and nuclear)

👉 So you could potentially save big on your total energy costs AND improve our environment by electrifying your home!

1. Engage one of our volunteer [Energy Coaches](#) and schedule a [no-cost home energy assessment](#) to formulate a plan to weatherize/insulate your home and install high-efficiency heat pumps for heating and cooling;
2. **Apply for rebates** through the National Grid-sponsored [Mass Save®](#) program (if you primarily heat your home with gas) or the [WMLP](#) (if you primarily heat your home with electricity, oil, or propane); and
3. Apply for and claim the applicable [federal tax credits](#).

MAKE IT EASIER TO RECEIVE YOUR UTILITY BILL AND EARN AN EARLY PAYMENT DISCOUNT

Please help us save paper and postage [by contacting us](#) to receive your monthly utility bill by email as a PDF attachment.

We also strongly recommend that you sign up directly with the WMLP to [AutoPay](#) from your checking or savings account. Payments would be automatically withdrawn within 15 days of bill issuance to receive our early payment discount of 5% (up to 1,000 kWh).

Coming Soon! However, if instead you currently or want to [pay online](#) using your checking account or credit card, [we will be changing our online bill payment vendor from Invoice Cloud to City Hall Systems](#). Our next newsletter will provide further information.



Chris Chan, WMLP Assistant Director

MEET THE WMLP'S ASSISTANT DIRECTOR

As a 22-year resident of Wellesley, Chris is thankful for the opportunity to serve his community and you as the WMLP's Assistant Director since October 2023. He previously directed the Electric Power Division for the MA Department of Public Utilities and managed Eversource's energy efficiency and customer solar programs. He has also served as Chair of the Town's Planning Board and a member of the Town's very first sustainability "Green Ribbon" committee. He lives near Wellesley Square with his wife, three college and high school-aged children, and dog. He had his heat pumps installed back in 2015, so what are you waiting for?

AND SOME NEWS FROM OUR FRIENDS AT:



Wellesley is a Climate Leader Community! The State recently recognized our Town as one of the very first "[Climate Leader](#)" communities for its work on climate change. The Town is now eligible to apply for more than \$1 million in grant funding for renewable energy and battery storage, building electrification, and energy efficiency projects toward achieving its [Climate Action Plan](#) goal of net zero greenhouse gas emissions by 2050.

Contact Us

Wellesley Municipal Light Plant

4 Municipal Way
Wellesley, MA 02481
781-235-7600

wmlp@wellesleyma.gov
www.wellesleyma.gov/mlp

Please report outages or other emergencies.

You must also contact us if you are moving out so we can set up a final reading of your electric and water meters and close out your account.

Take the Mode Shift Challenge! Between May 1 and June 16, [get around Town without your car and win prizes](#). Take at least 2 trips on the MWRTA Route 1 Bus, MWRTA Catch Connect, MBTA commuter rail, or our local trails and enter to win generous swag bag prizes; or try all 4 modes and enter to win a \$200 cash grand prize generously donated by [Sustainable Wellesley](#). You must be at least 12 years old to participate without an adult.

Come to our Climate Cafe at the Library on Thursday June 12, 4 to 7 pm: Curious about heat pumps? Thinking about an electric vehicle? Wish you knew more about public transportation options? Want to talk composting? Stop by the [Climate Cafe](#) in our library's Commons Room and discover the world of household climate action over coffee and refreshments on us! Talk with a volunteer [Energy Coach](#), learn about financial incentives, and plug into informational resources to support your climate action journey.