

WPS Air-Conditioning Supplemental Study *(Article 18)*



Town Meeting Presentation
April 1, 2025

Facilities Management Department

Agenda

- Why is Supplemental Study Needed?
- Proposed Study Scope
- Project Schedule
- Appropriation Amount

Why is Supplemental Study Needed?

1. More current and additional information required
2. Five years since original study completed
 - A. Ex. MS Auditorium now has AC
3. HVAC Technology has changed significantly
 - A. Hardy & Hunnewell: Heat Recovery vs. Heat Pump Systems
4. Estimated cost has increased significantly
5. Construction Schedule/Phasing major unknowns
6. ADA Requirements Likely to Apply w/ Higher Cost
7. Three options will be vetted in study *(2 are new)*
 - A. Preferred Option from 2020 study: Full AC
 - B. “Window Unit” option: Exterior Classrooms/Offices only
 - C. “Hybrid” AC/Heat Pump option: Exterior Classrooms/Offices only

Proposed Supplemental Study Scope

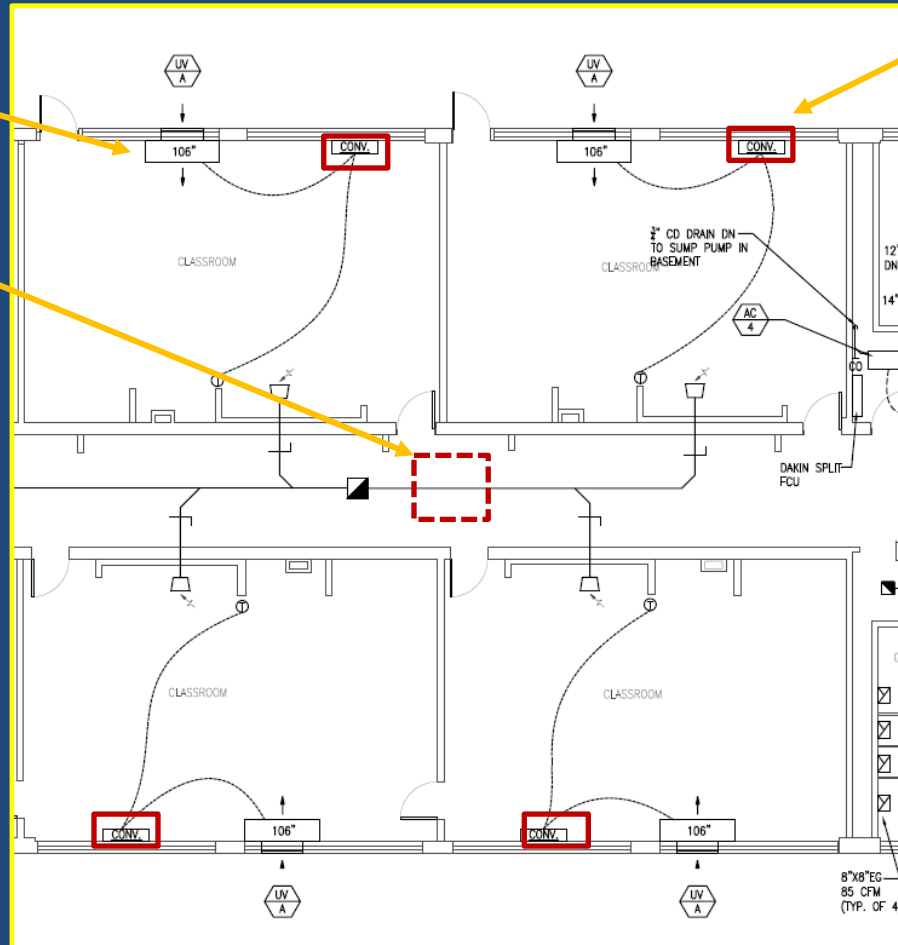
1. Develop 3 Air-Conditioning System Options
 - A. Update Preferred Option from 2020 Study
 - B. Window units in classrooms/exterior offices only
 - C. Ductless units/heat pumps in classrooms/offices only
 - Consider Geothermal (*only if grant funding available*)
2. Energy Analysis and Sustainability Considerations
3. Building Code Overview (*including MAAB/ADA*)
4. Schedule/Construction/Phasing
5. Cost Estimates
6. Report and Meetings

Option 1: Full Building AC

(Preferred Option from Study – Representative School Shown)

Existing
“Univent” to
Remain

New Rooftop
VRF (Outdoor)
Unit



New (Indoor)
Diffuser Unit

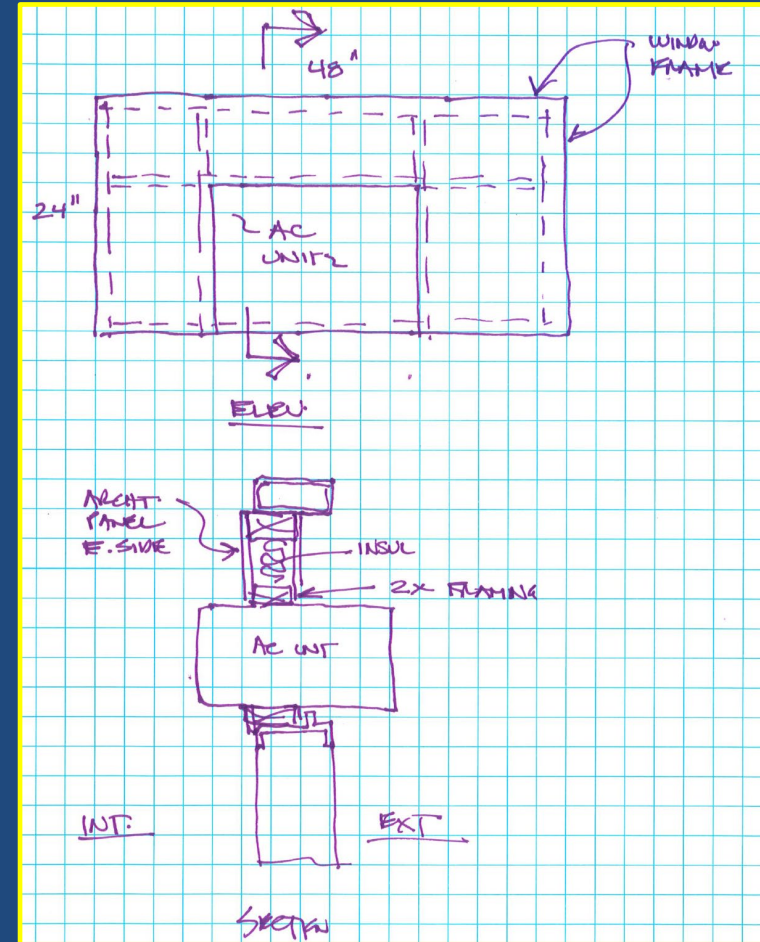


Option 2: Window Units

(Provides cooling at Exterior Classrooms/Offices only)



Window Unit (One or two per classroom)



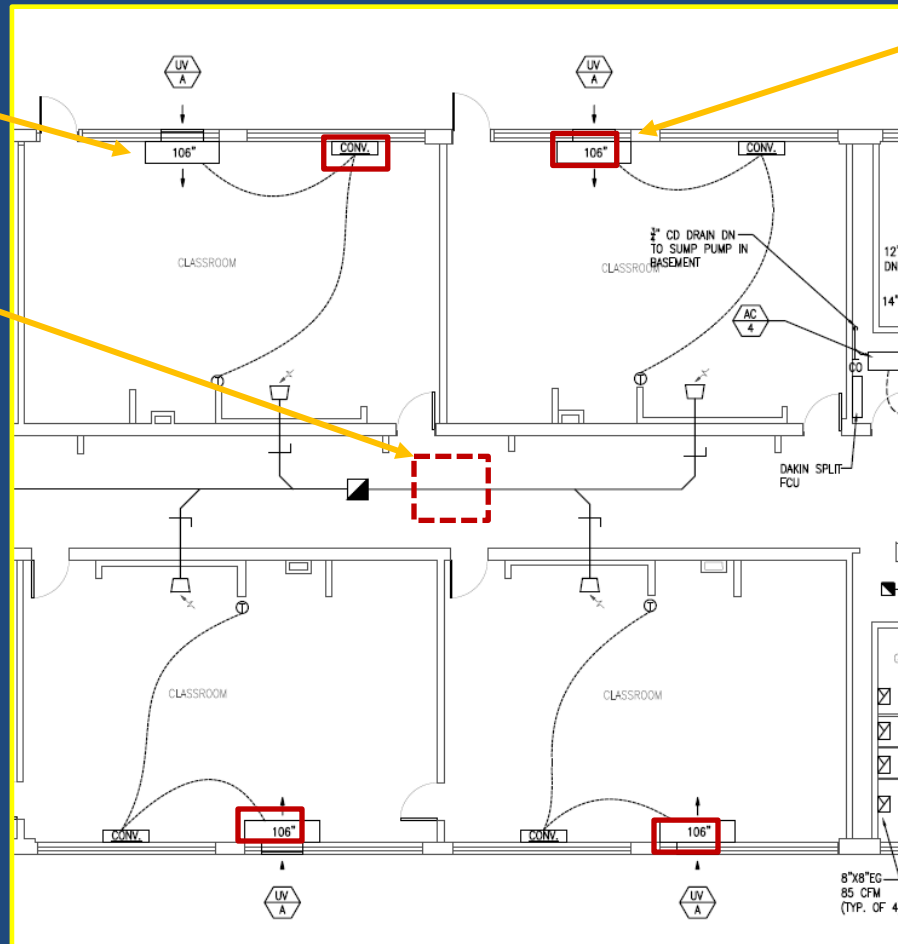
Window "Fit Out" Accommodations

Option 3: Hybrid Partial AC

(Provides cooling & heating at Exterior Classrooms/Offices only)

Existing
“Univent” to
Remain

New
Rooftop
VRF Unit



New
Diffuser



Project Schedule

- 2025 ATM: Supplemental Study Fund Request (SC)
- 2026 ATM: Design Fund Request (PBC)
 - *May be a Fall 2026 STM request*
 - Possible Debt Exclusion and Ballot Vote
- 2027 Fall STM: Construction Fund Request (PBC)
- Final Completion – *TBD depending upon options selected*

Appropriation Amount

- \$182,000 Appropriation Request

Project Budget for Supplemental Study School Air-Conditioning Project	Budget
ENGINEERING & OTHER PROFESSIONAL SERVICES	\$ 153,000
Engineers Study Fee	\$ 68,000
Reimbursable expenses	\$ 5,000
Detailed MAAB Evaluation (<i>additional placeholder</i>)	\$ 40,000
Addit. Cost Estimates (<i>additional placeholder</i>)	\$ 10,000
Additional Architectural Renderings (<i>additional placeholder</i>)	\$ 5,000
Testing & Inspections	\$ 10,000
Hazardous Materials sampling/testing	\$ 15,000
GENERAL SUPPLIES & SERVICES	\$ 6,000
Printing, mail, misc. expenses	\$ 1,000
FMD Support & Custodial OT	\$ 5,000
CONTINGENCIES	\$ 22,950
Soft Cost Contingency (15% of Engin)	\$ 22,950
TOTAL BUDGET	\$ 181,950
APPROPRIATION REQUEST	\$ 182,000

Thank you for your consideration!

