



TOWN OF WELLESLEY

Pickleball Court Study
2024

ZOOM MEETING

VIRTUAL MEETING ETIQUETTE

We want to ensure this conversation feels accessible to everyone and each one of you feels comfortable sharing your questions and comments.

Please be respectful and mindful of other's time when asking questions/ providing comments, so that all attendees are able to participate in the meeting.

Keep questions/ comments project-specific and not personal to yield a solution driven discussion.

DURING THE PRESENTATION:



VIA WEB:

Turn video on / off.

ZOOM TIPS

Here is how you can participate during the questions and answers part of the presentation.

DURING THE Q&A:



JOINING VIA PHONE?

Use *9 to raise hand to ask for audio / video permission to ask questions or provide comments.



VIA WEB:

Chat to ask questions / comments or provide responses to poll questions



Raise hand to ask for audio / video permission to ask questions or provide comments.





Basic Project Goals / Next Steps

Project Schedule

Site Inventory

Court Inventory

Community Survey

Sound Considerations

Associated Costs

Perrin Park



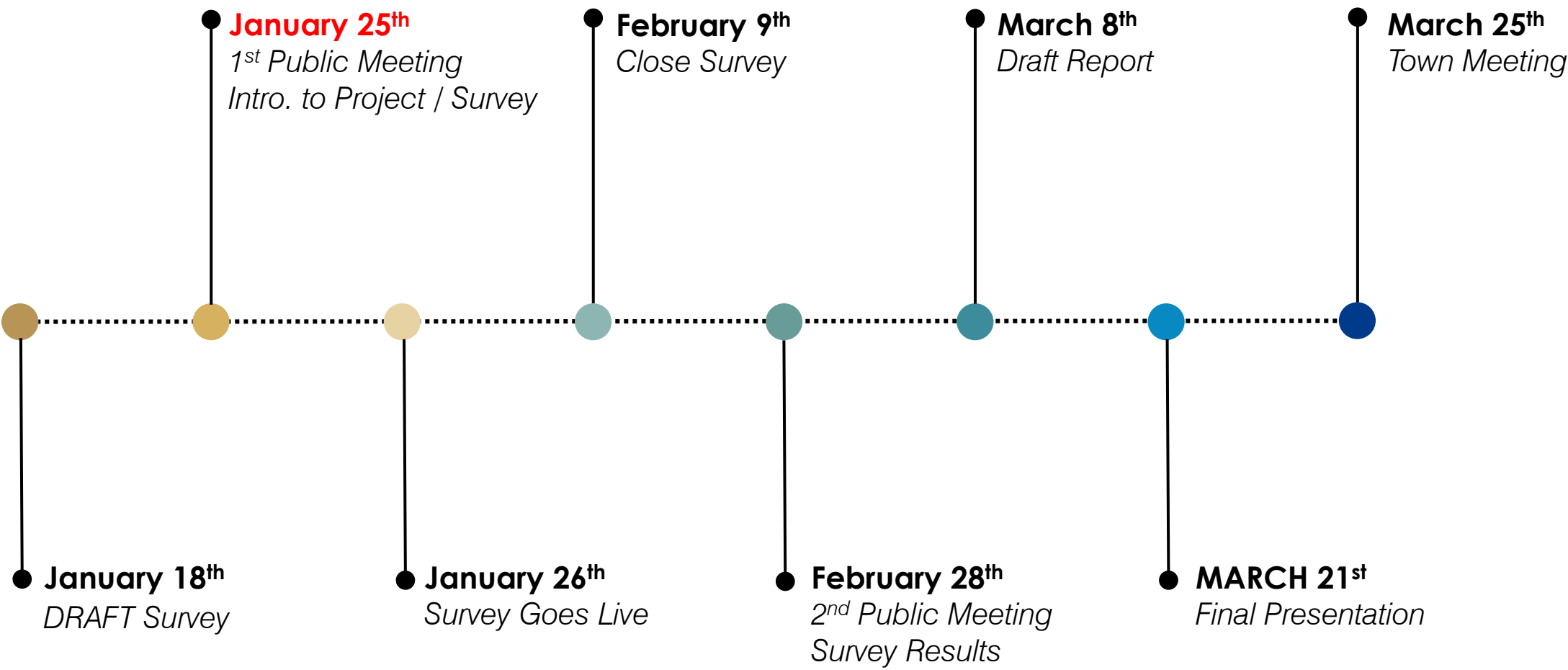
BASIC PROJECT GOALS / NEXT STEPS



- Complete a **public outreach** process to identify current and future pickleball needs / concerns.
 - Develop site **assessment criteria** that reflect community interests based on input collected through public outreach.
 - Utilizing current industry standards, **best practices** and emerging standards to identify current and future needs.
 - Complete an **inventory** of existing outdoor Pickleball courts and assess against optimal court criteria.
 - Using the proposed assessment criteria, **identify** 3 possible locations that may be suitable for pickleball in Wellesley.
-
- **Next Steps:** Develop a Feasibility Study of the properties to determine optimal locations.



PROJECT SCHEDULE



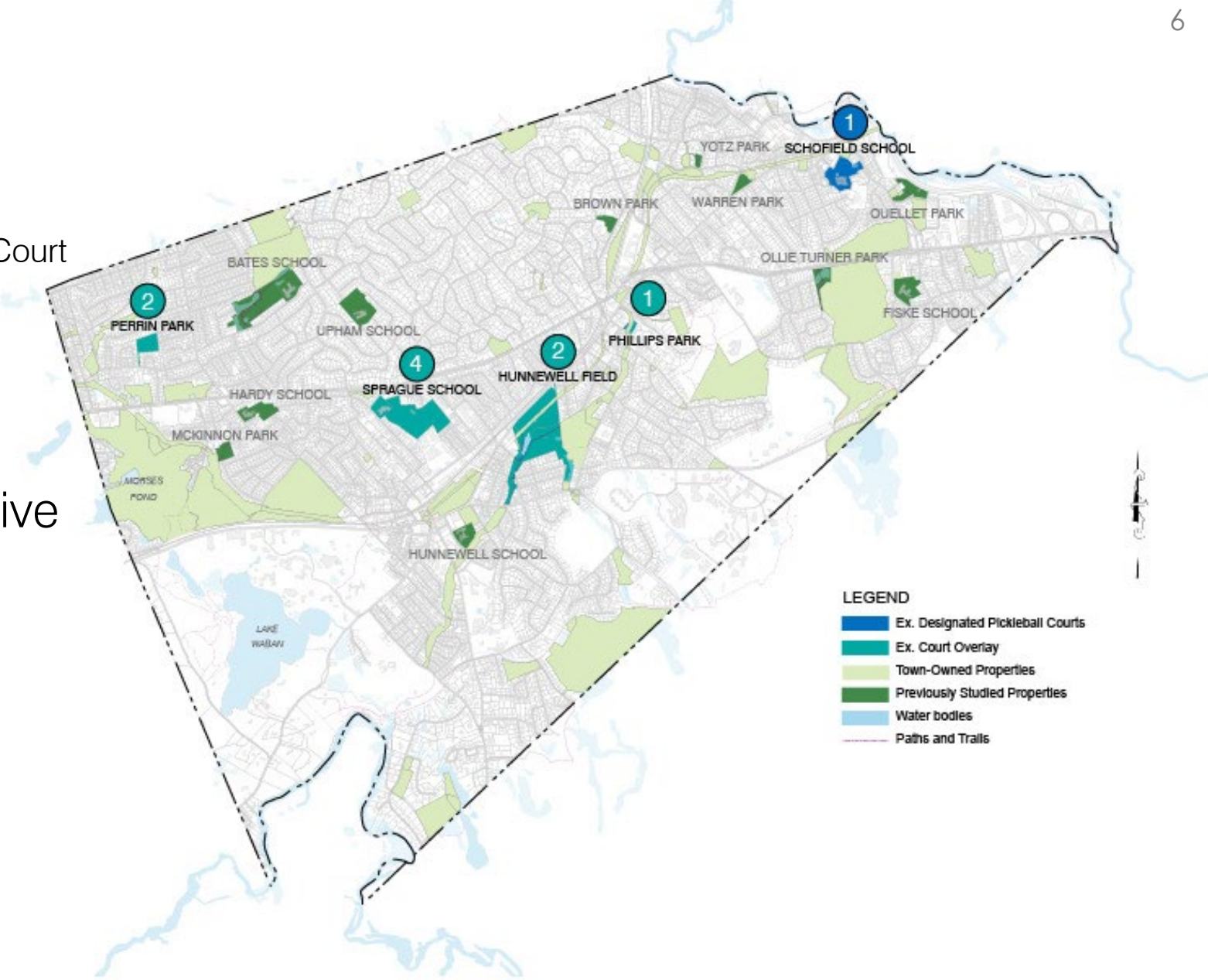
SITE INVENTORY

Existing Pickleball Courts

- Hunnewell Fields – (2) Temp. on Tennis Court
- Perrin Park – (2) on Basketball Court
- Phillips Park – (1) on Basketball Court
- Schofield School – (1) Court
- Sprague School – (4) on 2 Tennis Courts

Previously Studied Sites with Active Field & Court Use

- Bates School
- Brown Park
- Fiske School
- Hardy School
- Hunnewell School
- Ouellet Playground
- Upham School
- Warren Park



COURT INVENTORY

How many courts does Wellesley have?

TENNIS

- 3 Overlap with Pickleball

17

BASKETBALL

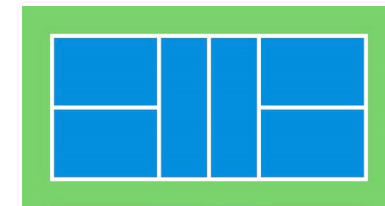
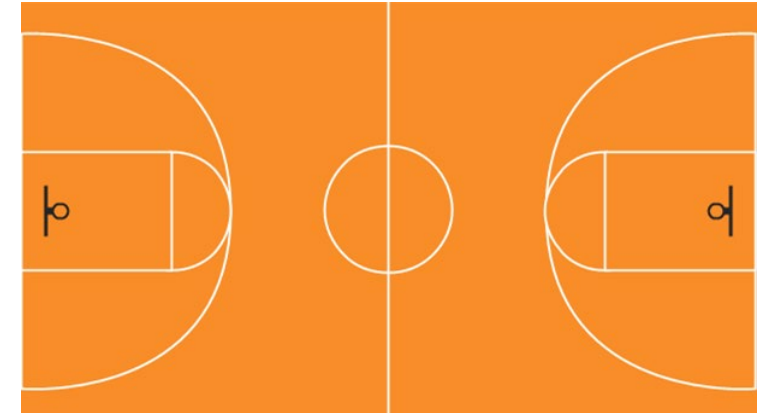
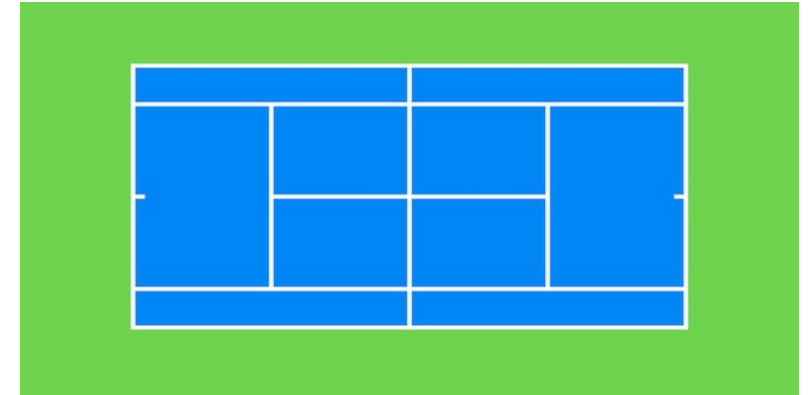
- 11 full courts (2 overlaps with pickleball)
- 2 half courts

12

PICKLEBALL

- 3 overlap with basketball
- 6 overlap with tennis
- 1 designated court

10



COMMUNITY SURVEY

Wellesley Town-Wide Pickleball Study

Introduction

The Town of Wellesley is conducting a survey of residents to get a better understanding of the community concerns about pickleball courts. Concerns include pickleball players' desire for more courts in Wellesley, existing courts too close to homes creating unwanted sound, lessening tennis court capacity to provide for pickleball, and environmental concerns to the extent pickleball affects the enjoyment of passive areas, natural habitat and wildlife.

We are asking for input to help us understand all concerns from both proponents and opponents of outdoor pickleball courts in Wellesley.

Topics include:

- *What criteria do you think should drive the selection of a site for Pickleball in Wellesley?*
- *Overall concerns regarding Pickleball courts in Wellesley?*
- *How often do you play Pickleball?*
- *Player demographics.*
- *Where is your preferred location of play, and why?*
- *What is important to you, etc.*
- *Make sure you note anything else you want us to include.*

"I'd like to see dedicated Pickleball courts with permanent nets."

"Let's improve the outdoor high school basketball courts to make them a gathering spot. Good quality court, lights, seating, water fountains."

"More pickleball and tennis would be awesome!"

"Upgrades to Schofield Tennis Courts and Pickleball Courts is much needed and would be welcomed by the neighborhood."

In your words...



Sound Considerations

- Using measured pickleball noise data and **industry data** to develop standards necessary to ensure the peace and quiet of residents and businesses nearby
- These standards will address the specific nature of pickleball noise and adhere to the State & National **noise guidelines** the Town follows.
- Standards will not be written as site specific, but rather a **set of criteria** for all town owned lands.
- Consider potential **noise mitigation** requirements based on site specific factors. (Some examples being barrier height, material and extents and/or the use of noise reducing paddles)

Identified Pros & Cons

- ✓ Music and cheering at sports events can be a pleasant sound.
- ✓ With proper guidelines (time of day, volume), announcers and music would add fun and excitement to youth sporting events.

"Town needs a balanced sound policy for all playing fields providing both guidelines and opportunities for our community to enjoy the physical, social and emotional benefits of musically inspired active recreation. "

"We need quiet to work from home, for our kids to do our homework, for little kids to go to bed early, to relax and read books in our backyards."

- ✗ Potentially disruptive to neighboring residences.
- ✗ Potentially blocks out sounds of nature such as nearby brooks and birds.
- ✗ Not essential to sporting events.

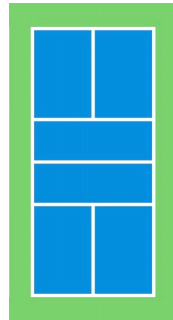


ASSOCIATED COSTS

The following represent typical costs associated with recreational level (30' x 60') full scale court construction. All costs are related to the court only. Additional costs may be required for surrounding site accommodations and should be assessed during initial design phases.

ITEM	COST	DESCRIPTION
Court Surfacing	\$10 - \$12 per SF	Hot mix asphalt paving, gravel base, color seal coat
Court Fencing	\$120 per linear foot	10' height black vinyl chain link perimeter fencing only
Court Amenities	\$3k - \$5k per court	Pickleball nets & Posts
Sound Proofing	TBD	Sound barriers, additional noise mitigation.
Site Work	TBD	Landscaping, permitter pathways, grading, earthwork, etc.

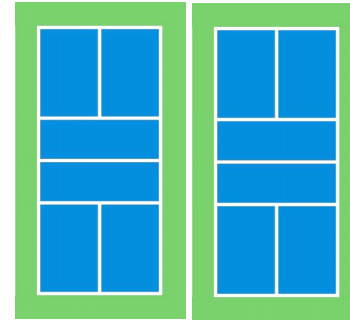
1,800 sf
180 lf
fencing



(1) Pickleball Court

\$44k - \$48k

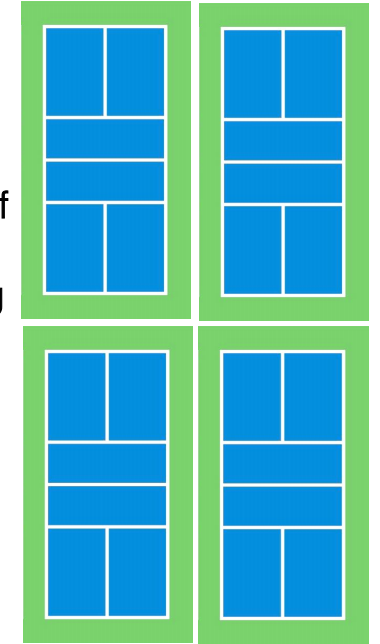
3,480 sf
240 lf
fencing



(2) Pickleball Courts

\$70k - \$82k

6,840 sf
360 lf
fencing



(4) Pickleball Courts

\$124k - \$145k



THANK YOU

Questions

