

TOWN OF WELLESLEY



REPORTS TO THE SPECIAL TOWN MEETING

MONDAY, APRIL 11, 2022
7:00 P.M.

Zoom Videoconferencing Platform

by the

ADVISORY COMMITTEE

Please read this Report and bring it with you to Town Meeting.

For more information and updates, please visit www.WellesleyMA.gov.

This page intentionally left blank

TOWN OF WELLESLEY



**ADVISORY COMMITTEE LETTER
SPECIAL TOWN MEETING, APRIL 11, 2022, at 7:00 p.m.**

TERM ENDS 2022

Jennifer Fallon
Neal Goins, Chair
Corinne Monahan
Patti Quigley, Vice Chair

TERM ENDS 2023

Shawn Baker, Secretary
Tom Cunningham, Vice Chair
Jake Erhard
Jeff Levitan
Doug Smith

TERM ENDS 2024

Susan Clapham
Alberto Ferrer
Wendy Paul
Pete Pedersen
Madison Riley

To the Town Meeting Members of the Town of Wellesley:

April 4, 2022

Welcome to the April, 2022 Special Town Meeting! Attached please find the Report to Special Town Meeting containing the Advisory Committee's recommendation. This document is referred to during Town Meeting and is most useful if read in advance and kept handy during the presentation and discussion.

The Report will also be posted on the Town's website at www.wellesleyma.gov.

The matter coming before the April 2022 STM is:

- To transfer a parcel of Town land to the care, custody, management and control of the Municipal Light Board for Municipal Light Plant purposes

The Advisory Committee appreciates the expertise and knowledge of those who presented to us on this year's STM matter.

The Advisory Committee always welcomes input, whether through the Citizen Speak opportunities available at each of our meetings or via email at advisorycommittee@wellesleyma.gov.

Sincerely,

Neal Goins, Chair
Advisory Committee

INDEX TO WARRANT ARTICLES

1. Receive Reports.....	3
2. Authorization – Land Transfer: 4 – 8 Municipal Way	3

SPECIAL TOWN MEETING

ARTICLE 1. To receive and act on the reports of Town officers, boards and committees, including the Report to this Special Town Meeting of the Advisory Committee, and to discharge presently authorized special committees, or to take any other action related thereto.

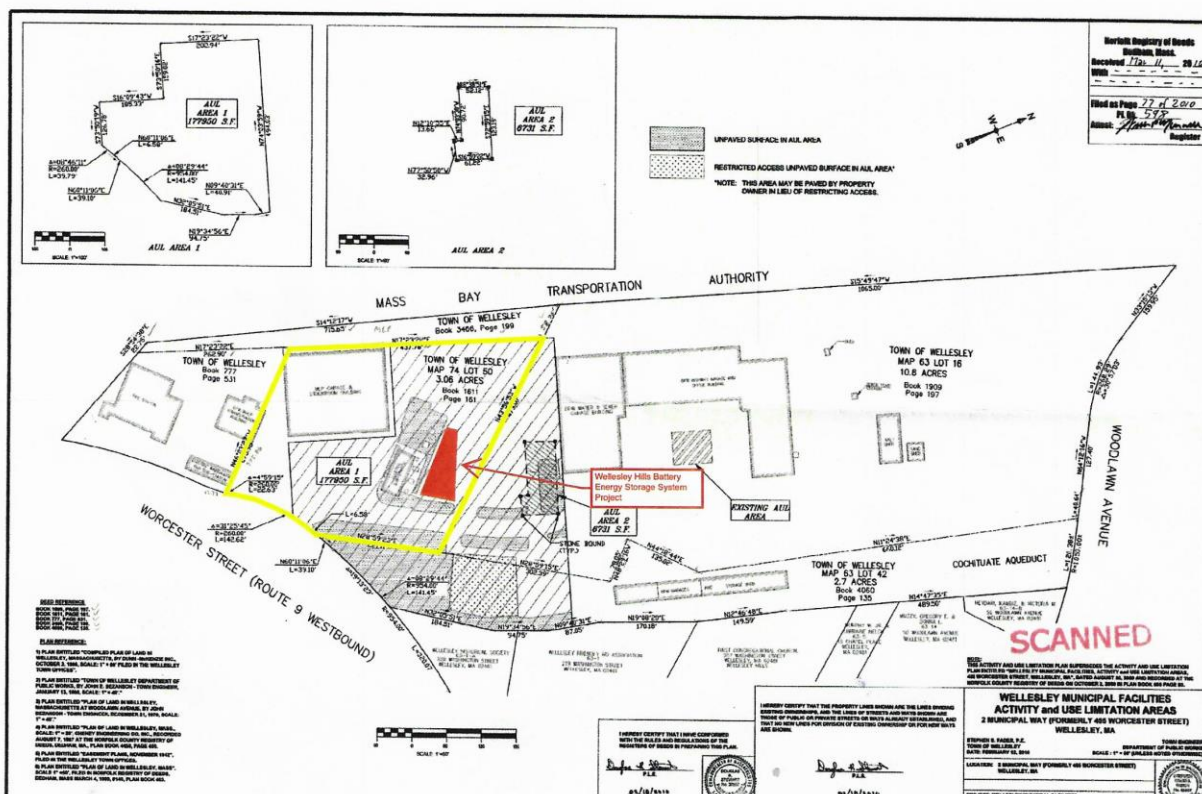
(Select Board)

Advisory expects no motion under this Article.

ARTICLE 2. To see if the Town will vote in accordance with Section 15A of Chapter 40 of the Massachusetts General Law to transfer the care, custody, management, and control to the Wellesley Municipal Light Board, for light plant purposes, 4-8 Municipal Way (Parcel IDs 74-50) shown as Map 74 Lot 50 on a Plan entitled "Wellesley Municipal Facilities Activity and Use Limitation Areas", dated February 18, 2010, a copy of said plan is on file in the Town Clerk's office and on record in the Norfolk Registry of Deeds as page 77 of 2010 in Plan Book 598;

Or to take any other action related thereto.

(Select Board/Municipal Light Board)



Overview

The care, custody, management, and control of all Town properties is assigned by Town Meeting to various Town boards, including the Select Board (SB), the Municipal Light Board (MLB), the School Committee, the Board of Public Works (BPW), the Natural Resources Commission and the Library Board of Trustees. It recently came to the attention of the MLB, in conjunction with the structuring of a lease for a proposed battery energy storage project that the Parcel was not fully under its care, custody, management and control, which is required to execute the lease. The SB believes that the Parcel, which was acquired for “general municipal purposes” in 1924, was not formally transferred to the MLB when the Wellesley Municipal Light Plant became a separate entity in 1994. The SB notes that the Parcel has *de facto* operated under the care, custody, management, and control of the MLB for several decades. The SB and the BPW must vote to declare that they no longer need the Parcel for “general municipal purposes” and that the Parcel is surplus to their needs. The transfer must then be approved by a two-thirds vote of Town Meeting Members. It is expected that the SB and the BPW will vote to approve the foregoing prior to the Special Town Meeting.

Advisory Considerations

Advisory supports the proposed transfer of full care, custody, management, and control of the Parcel to the MLB. The transfer is consistent with the long-standing management of the Parcel.

Passage requires 2/3 vote.

Advisory recommends favorable action, 9 to 0.