



## Wellesley Forum on PFAS

Valerie Moran

Director of Waterworks

Stephen Estes-Smargiassi

Director of Planning and Sustainability

Rebecca Weidman

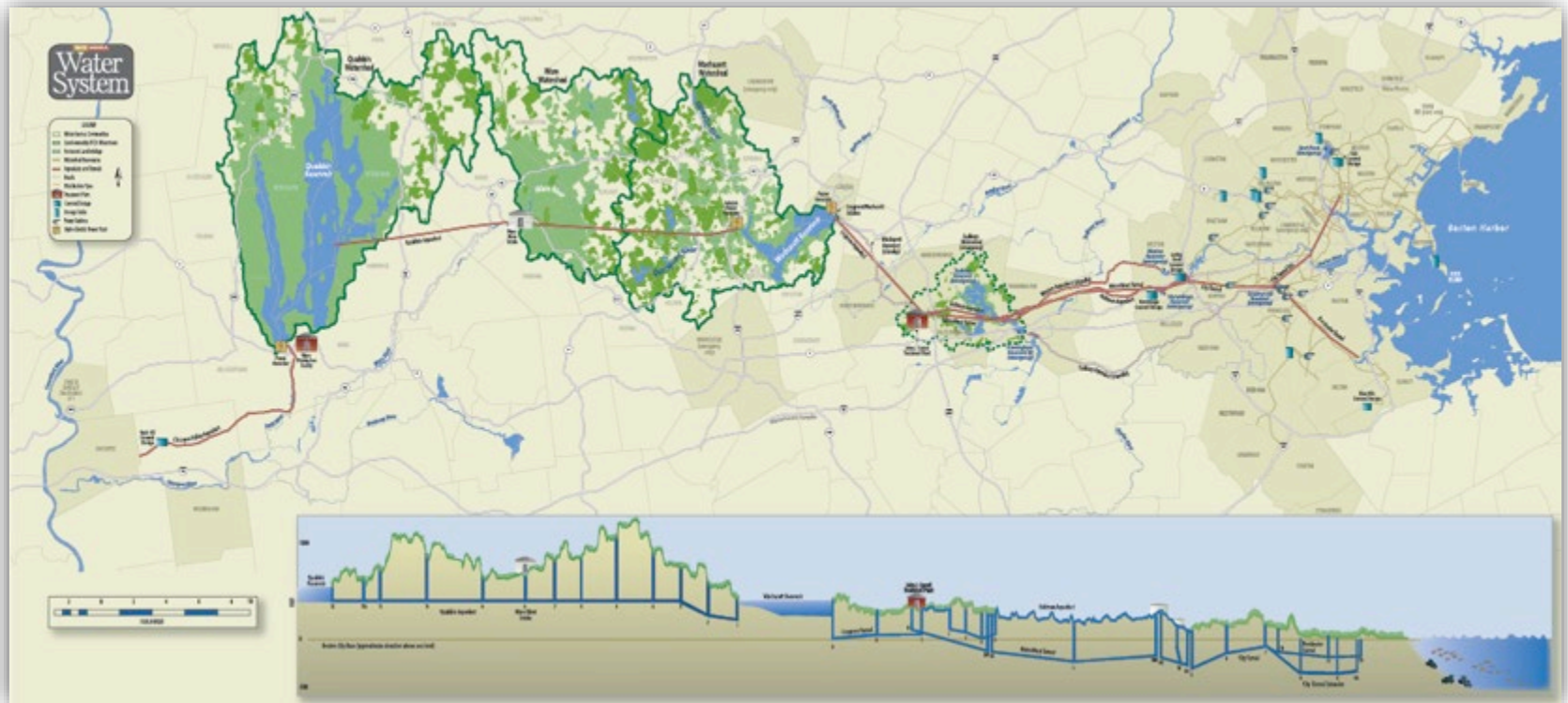
Director of Regulatory and Environmental Affairs

December 16, 2021



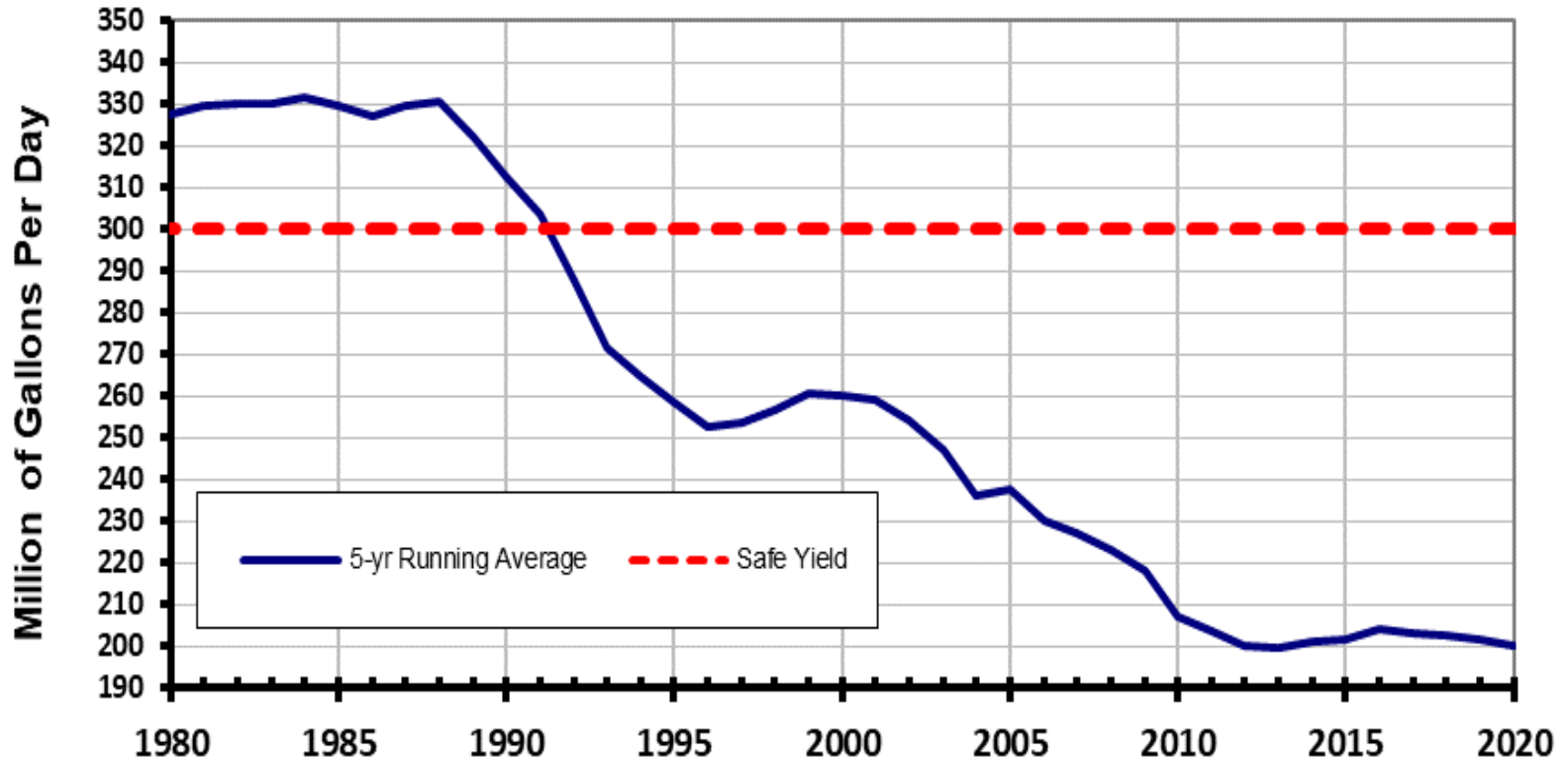
# MWRA Water System

MWRA provides an average of 200 million gallons per day to over 2.5 million customers in 53 communities, with a peak demand of 350 million gallons.





# Current MWRA Water Use is Well Below Safe Yield





# MWRA PFAS Results, Posted on MWRA.com

- Multiple rounds of PFAS testing starting in August 2019. All results are trace or not detected.
- Most recent results (April 2021):

PFAS Analyte	Metro Boston Result	CVA Result
<b>PFAS6 (regulated)</b>		
PFHxS	Not detected	Not detected
PFHpA	Trace*	Not detected
PFOA	Trace*	Trace*
PFOS	Trace*	Not detected
PFNA	Not detected	Not detected
PFDA	Not detected	Not detected
Sum of PFAS6 - compare to MassDEP MCL of 20 ng/l	0 ng/l	0 ng/l
<b>Unregulated PFAS</b>		
PFBS	Trace*	Not detected
PFHxA	Trace*	Not detected
NEtFOSAA	Not detected	Not detected
NMeFOSAA	Not detected	Not detected
PFDoA	Not detected	Not detected
PFTeDA	Not detected	Not detected
PFTTrDA	Not detected	Not detected
PFUnA	Not detected	Not detected
11Cl-PF3OUdS	Not detected	Not detected
9Cl-PF3ONS	Not detected	Not detected
Adona	Not detected	Not detected
HFPO-DA	Not detected	Not detected

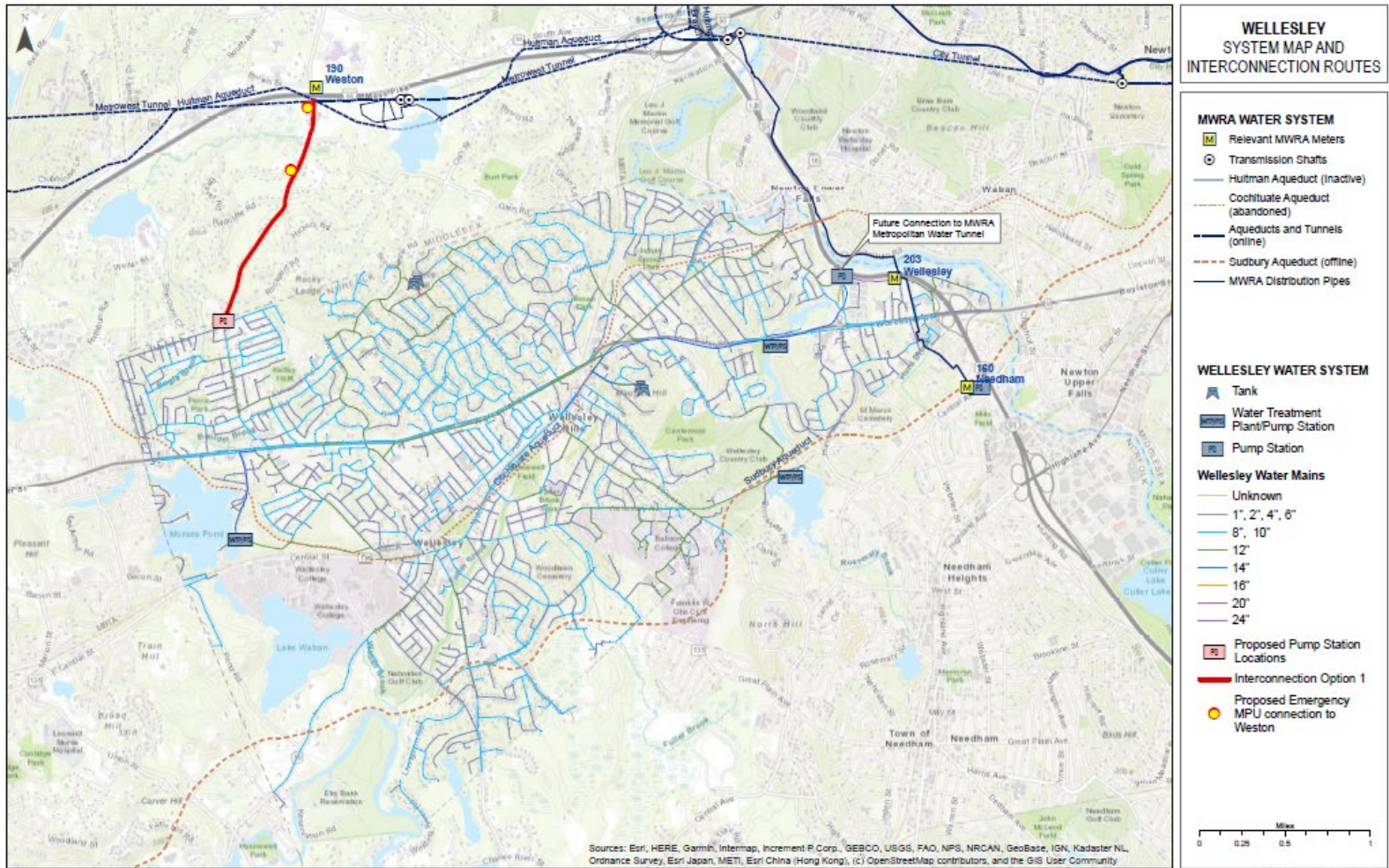
\* trace amounts are present, but they are below the minimum concentration that can be reported as a quantified value.

MCL = Maximum Contaminant Level, highest level allowed





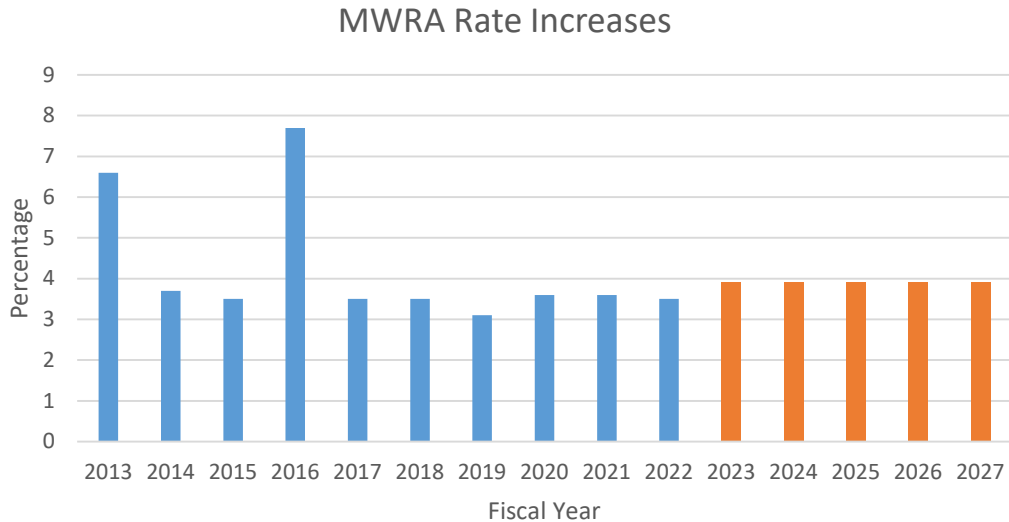
# Conceptual Design of Additional Wellesley Connection





# MWRA Rates: Current, Historic, Future

- Fiscal Year 2022 Water Rates:
  - \$4,320 per 1 million gallons of water
- Rate increases over time



An aerial photograph of a large reservoir with a dam on the right side. The surrounding landscape is lush green with rolling hills. In the foreground, there is a large building with a red roof and a chimney, surrounded by trees. The sky is clear and blue.

**Stephen Estes-Smargiassi**  
[smargias@mwra.com](mailto:smargias@mwra.com)

**Valerie Moran**  
[Valerie.Moran@mwra.com](mailto:Valerie.Moran@mwra.com)

**Rebecca Weidman**  
[Rebecca.Weidman@mwra.com](mailto:Rebecca.Weidman@mwra.com)

[www.mwra.com](http://www.mwra.com)

**Drink with Confidence**  
**Flush with Pride**