



CORONAVIRUS BRIEFING: MAY 28, 2021

THE CENTRAL COMMUNICATIONS BRIEFING FOR THE TOWN OF WELLESLEY

Visit Wellesley's COVID-19 Information Hub at www.wellesleyma.gov/coronavirus

Total confirmed COVID-19 cases in Massachusetts: 660,513

[View the COVID-19 Interactive dashboard.](#)

NEW confirmed positive cases in Wellesley: 0 (past 14 days)

Average Daily Incidence Rate/100,000 for Wellesley: 0.00 (past 14 days)

Percent Positivity of Testing: .03% (past 14 days)

Vaccination Rate in Wellesley: 66% (fully vaccinated residents)

[View the COVID-19 Vaccination Report.](#) (Updated May 13)

Wellesley is reporting no new COVID-19 cases! Through ongoing community efforts, we also have one of the highest vaccination rates in the Commonwealth. Tomorrow, Saturday, May 29, all COVID-19 restrictions are lifted. Masks and face coverings are no longer required, however non-vaccinated individuals are encouraged to follow CDC mask guidelines. We look forward to reopening all of our municipal buildings and revitalizing our community. Town and Health officials are incredibly grateful to everyone for working together to keep safe and keep #WellesleyWell. Thank you!

COVID-19 Restrictions Lifted.

On Saturday, May 29, 2021 all [COVID-19 restrictions in the Commonwealth are rescinded](#). The complete reopening of the Commonwealth is largely due to the successful vaccination rate in Massachusetts and the sharp decline in the number of Coronavirus cases. The State of Emergency will end on Tuesday, June 15, 2021.

- All industries are permitted to open
- Capacity is increased to 100% for all industries
- Gathering limits are lifted

All industries are encouraged to follow [CDC guidance](#) for cleaning and hygiene protocols.

Face Covering Advisory. The current mask/face covering order is rescinded effective May 29 and is replaced by a [face covering advisory](#). Non-vaccinated individuals are advised to continue wearing face masks and continue distancing in most settings. Face coverings are still required on public and private transportation (including rideshares, taxis, ferries, MBTA, Commuter Rail, air travel), healthcare facilities and providers, congregate care settings, and health and rehabilitative day services.

Face coverings are still required **indoors** for staff and students of K-12 schools and early education providers.

Municipal Buildings Open to Public. Town Hall and all municipal buildings will fully reopen to the public on Tuesday, June 1. Wellesley does not have a local mask order but is recommending that non-vaccinated individuals continue to wear masks when inside Town buildings.

- The Council on Aging patio will reopen on June 1 for all senior residents. There are specific programs on certain days. To learn more, contact the COA at 781-235-3961.
- The Warren Recreation Building will reopen to the public on May 29. Parents may drop off/pick up students or remain in the building during classes. Adults are encouraged to wear masks indoors, especially those who are not vaccinated. For indoor adult classes, masks are optional for adults and instructors; for indoor youth classes, masks are required for students and instructors. Please call the Recreation Department with questions at 781-235-2370.
- In-person Building inspections will resume on June 1, however specific situations may require virtual inspections which will be performed at the discretion of the inspection. [Updated protocols here.](#)
- In-person meetings will resume on June 15, pending any decisions by the Governor to continue remote or hybrid meetings through September 1.

Memorial Day Ceremony on May 31.

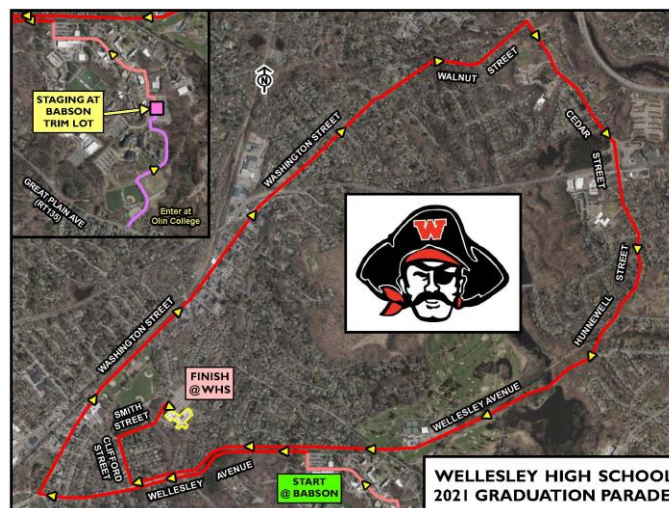


Wellesley will hold an in-person Memorial Day ceremony on Monday, May 31 at 7 p.m. at the War Memorial at Town Hall (rain location is Wellesley High School). The event will honor and remember all citizens who died serving our country. All residents are invited to attend.

Congratulate the Class of 2021.

Graduation week festivities for the Wellesley High School Class of 2021 will take place next week. They include:

- **Senior Prom:** Wednesday, June 2, WHS Cafeteria & Courtyard. Activities include entertainment, food, and outdoor dancing. The community is invited to Wellesley High School between 6:30 – 7:00 p.m. to welcome seniors as they arrive.
- **Graduation:** Friday, June 4 at 5 p.m., Hunnewell Track & Field Complex. Outside, in-person with assigned seating for families and general seating in the grandstand.
- **Class of 2021 car parade:** Saturday, June 5 at 9 a.m. Line the streets to cheer on the Class of 2021 and their families as they parade through Wellesley. Parade route starts at Babson College, continues along Washington Street, Cedar Street, and Wellesley Avenue, ending at Wellesley High School.



-END-