



CORONAVIRUS BRIEFING: DECEMBER 28, 2020

THE CENTRAL COMMUNICATIONS BRIEFING FOR THE TOWN OF WELLESLEY

Visit Wellesley's COVID-19 Information Hub at www.wellesleyma.gov/coronavirus

*Due to the holidays, case data this week will be updated on Jan. 2

Total confirmed cases in Massachusetts: 342,764

[View the COVID-19 daily dashboard.](#)

Total confirmed positive cases in Wellesley: 599 (90 new cases in past 14 days)

Average Daily Incidence Rate/100,000 for Wellesley: 21.60 (past 14 days)

Percent Positivity of Testing: 1.26% (past 14 days)

[View the Weekly COVID-19 Public Health Report.](#)*

*Data is based on information available to MDPH as of December 24.

As we all prepare to celebrate the New Year, Health officials continue to urge everyone to follow these recommended guidelines to stay safe:

- Wear a mask
- Practice social distancing and limit in-person celebrations to household or COVID pod members only
- Postpone or cancel travel this holiday season. If you do travel, be aware of and comply with [Massachusetts travel order](#) requirements.
- Follow all the current [State gathering size limits](#).

[Read the State holiday guidance.](#)

If you are concerned or have questions about situations that could increase the risk of exposure to COVID-19, please call the Health Department at 781-235-0135, or the Wellesley Police Department non-emergency number at 781-235-1212.

REMINDER: Tighter Restrictions in Effect.

New State restrictions now in effect limit capacity to 25 percent at many businesses, including at restaurants, personal services, offices, places of worship, retail, golf facilities, libraries, gyms, and more. Workers and staff do not count toward the capacity totals for restaurants, personal services, places of worship and retail locations such as grocery stores.

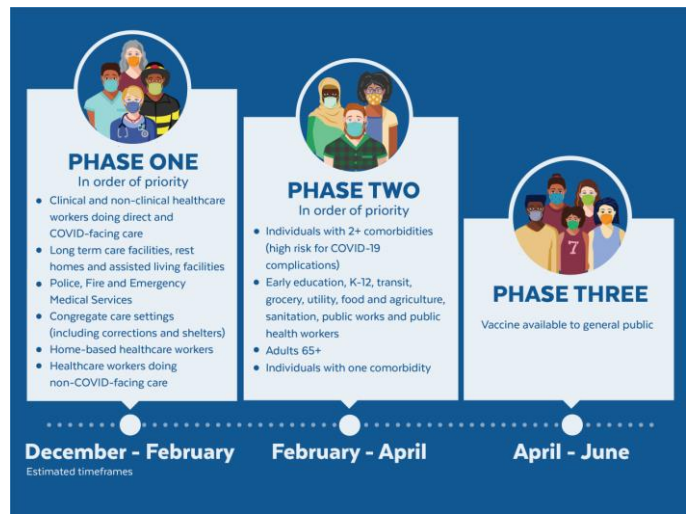
Please remember, new gathering restrictions limit the number of people at private homes, event venues and public spaces to **25 people outdoors** and **10 people indoors**. This new order will remain in effect until January 9, 2021 and may be extended longer. Read [a summary of the restrictions](#).

COVID-19 Vaccine Information for Massachusetts.

Many residents are asking about the COVID-19 vaccine and the immunization phases. The Health Department currently does NOT have doses of the COVID-19 vaccine available for public distribution.

Detailed vaccine information can be found in the State [Weekly COVID-19 Vaccination Report](#) where residents can track information on vaccines shipped and administered.

If you have questions about the phase in which you can be vaccinated, email COVID-19-Vaccine-Plan-MA@mass.gov. Complete vaccine information and Frequently Asked Questions (FAQs) are available on the Massachusetts [COVID-19 vaccine webpages](#).



Pay Real Estate Taxes Online.

Real estate tax bills will be sent to residents this week via email or direct mail, depending on how you are signed up to receive your bills. Homeowners are strongly encouraged to [pay bills online](#) since Town Hall remains closed to the public. Tax payments also may be hand-delivered to the ballot and payment drop box in front of Town Hall (Washington Street side entrance). This secure drop-box is checked multiple times a day. Questions? Please contact the Treasurer's office at 781-431-1019 ext. 2266.

-END-