



## CORONAVIRUS BRIEFING: DECEMBER 11, 2020

THE CENTRAL COMMUNICATIONS BRIEFING FOR THE TOWN OF WELLESLEY

Visit Wellesley's COVID-19 Information Hub at [www.wellesleyma.gov/coronavirus](http://www.wellesleyma.gov/coronavirus)

**Total confirmed cases in Massachusetts:** 269,929

[View the COVID-19 daily dashboard.](#)

**Total confirmed positive cases in Wellesley:** 508 (82 new cases in past 14 days)

**Average Daily Incidence Rate/100,000 for Wellesley:** 19.71 (past 14 days)

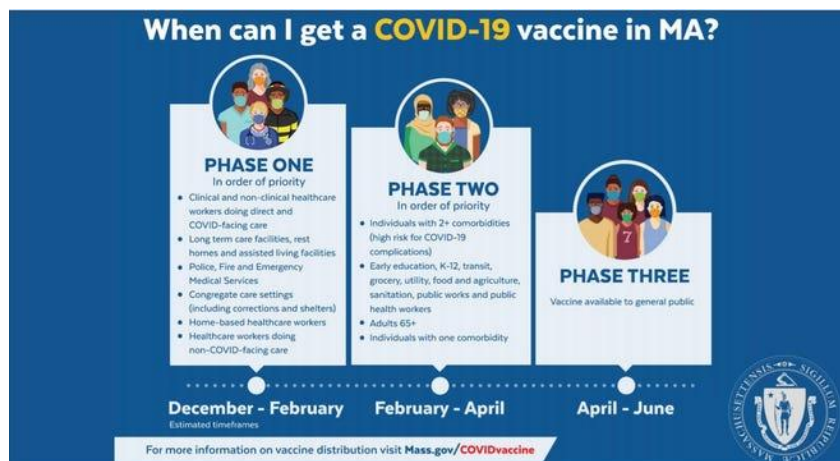
**Percent Positivity of Testing:** 0.98% (past 14 days)

[View the Weekly COVID-19 Public Health Report.](#)

*\*Data is based on information available to MDPH at a specific time. Case counts may change as data cleaning occurs.*

### COVID-19 Vaccine Information for Massachusetts.

Hospitals in the Commonwealth are preparing for the first round of COVID-19 vaccines from both Pfizer and Moderna, which may arrive as early as next week. Doses of the vaccine will be given to residents in three phases, with highest priority going to frontline medical workers, followed by residents and staff of long-term care facilities. The proposed timeline is below. The vaccines will require two doses, administered 3-4 weeks apart.



The vaccine will initially be administered by medical professionals – doctors, nurses, dentists, pharmacists, etc. and will ultimately be available at many healthcare sites – hospitals, private medical offices, community health centers, pharmacies (contracts with CVS and Walgreens). Mass vaccination sites will likely be set up to assist with the unprecedented scale of COVID-19 vaccinations. The shots will be free and will not be subject to insurance fees. [Read complete vaccine information here.](#)

**Flu Vaccine Reminder from WPS.** Wellesley Public Schools is reminding families of the State mandate that any students attending daycare through graduate school must be vaccinated for flu by December 31, 2020. WPS families should email flu shot documentation to school nurses. This information is required for students to attend school in-person after the upcoming winter break.

### **Phase 3, Step 1 Rollback in Effect on Sunday, December 13.**

A reminder that all Massachusetts communities will go back to Phase 3, Step 1 of the reopening process, effective on Sunday, December 13. The changes reduce indoor capacities, tighten workplace restrictions, and make restaurants and offices safer. [Read the rollback announcement](#). Significant impacts of the rollback include:

- Closing indoor performance venues and high-contact businesses, and reducing capacity limits to 40% for business sectors. [See Phase 3 guidance](#).
- Further [limiting gatherings](#) (50 people outdoors/gatherings of 25 people or more must notify the Health Department).
- New restaurant guidelines requiring:
  - Diners to wear masks at ALL TIMES except when eating/drinking
  - No more than six patrons at a table
  - 90-minute dining limit on tables
  - No musical performances at restaurants, no food court seating
- Office workers to wear masks at all times except when alone in their workspace; limited break room use.
- Gym patrons to wear masks at all times while in gyms/recreation facilities.

### **Quarantine or Isolation Tips.**

Proper quarantine and isolation are critical to stop the spread of COVID-19. State and local health officials are following revised quarantine guidance from the Centers for Disease Control (CDC). [See the DPH quarantine information and guidance](#). Read these [tips and FAQs](#) to make quarantine or isolation easier and help you get the support you need.

### **Run for Public Office.**

Serve the Town of Wellesley and run for a public office. [See the list of open positions](#). The last day to obtain nomination papers for Town-wide office is Friday January 8, 2021, at 5:00 PM. An outdoor appointment with the Town Clerk is required. Email [Elections@Wellesleyma.gov](mailto:Elections@Wellesleyma.gov) or call 781-431-1019, ext. 2252. The Clerk's office is open Monday-Friday 8:00 AM to 4:00 PM. **Please note:** Town Hall closes at noon on December 24 and 31 and will be closed on December 25 and on January 1, 2021.

### **Fill the (Virtual) Red Kettle.**



Thank you to everyone in the community who has contributed to the Wellesley/Salvation Army Red Kettle Drive this year! More than \$8,000 has been raised so far; the goal is to raise \$20,000. These funds directly aid our community and support the Council on Aging, the Health Department, Veterans' Services, the Housing Authority, and many other Wellesley departments and local organizations. Donate [online](#) or with a check payable to Wellesley Kiwanis Club, and mail to Wellesley Kiwanis Club, P.O. Box 812201, Wellesley, 02482, noting "Salvation Army" in the memo line.

-END-