

**nationalgrid**

HERE WITH YOU. HERE FOR YOU.

# Maintaining and Improving the Gas Distribution System in Wellesley



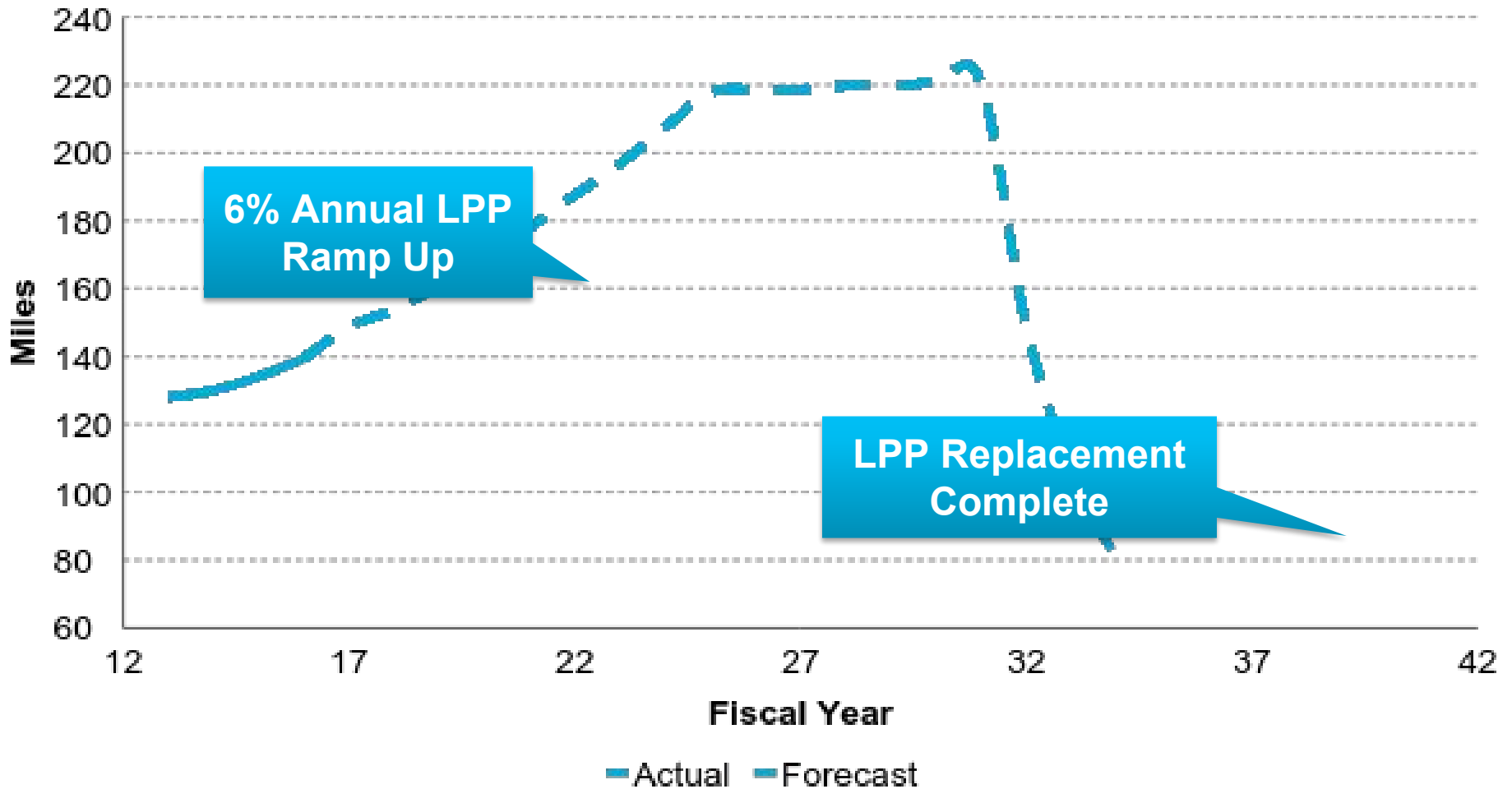
Sue Fleck, Vice President, Gas Safety & Compliance  
March 21, 2017



# Our Gas System: An Overview

- New England has some of the oldest gas mains in the country
- Older pipe consisting of cast iron, wrought iron and bare steel is more prone to leaks; in Massachusetts, 31 percent of our roughly 11,000 miles is classified as “leak-prone”
- Expediting replacement of this pipe is reducing leak activity on the system
- In addition to main replacement, National Grid is committed to eliminating all low-level leaks on the system within 10 years - prioritizing the highest emitting leaks first

# Main Replacement Forecast



# Gas Facts for Town of Wellesley

- Wellesley has approximately 121 miles of gas main
  - Of that, roughly 95 miles is cast/wrought iron or unprotected steel
- As of March 20, 2017, Wellesley had 193 leaks, (3 Grade 2s, 190 Grade 3s)
- Plans to replace 4-6 miles over next 3-4 years, increasing annual mileage over time
- Route 9 Repaving Project

# The Evolution of Gas Leak Repair

- Only with the passage of a 2014 law in Massachusetts was there a mandate to standardize gas leak classification
- National Grid recognizes the need to include environmental considerations into developing replacement and repair policies
- As part of an Energy Bill passed in August 2016, the DPU and EPA opened a proceeding to establish criteria for evaluating the environmental impact of leaks and set timelines to eliminate leaks found to have significant environmental impact
- We are collaborating with MA gas companies to define environmentally significant leaks and committing to eliminate all existing leaks in our backlog within 10 years – not just the environmentally significant leaks.



# What's Next: Identifying High Emitters

**nationalgrid**  
HERE WITH YOU. HERE FOR YOU.

- Working with HEET and Mothers Out Front in the communities of Brookline, Lexington, and Newton on a pilot to help identify and repair the most environmentally significant leaks. And working with a new leak detection technology provider, MSS
- Participating in DPU hearings on proposed plans from MA utilities to eliminate all leaks within 10 years
- Ramping up hiring: 240 new gas employees have been hired and are in training hopefully to begin working this year

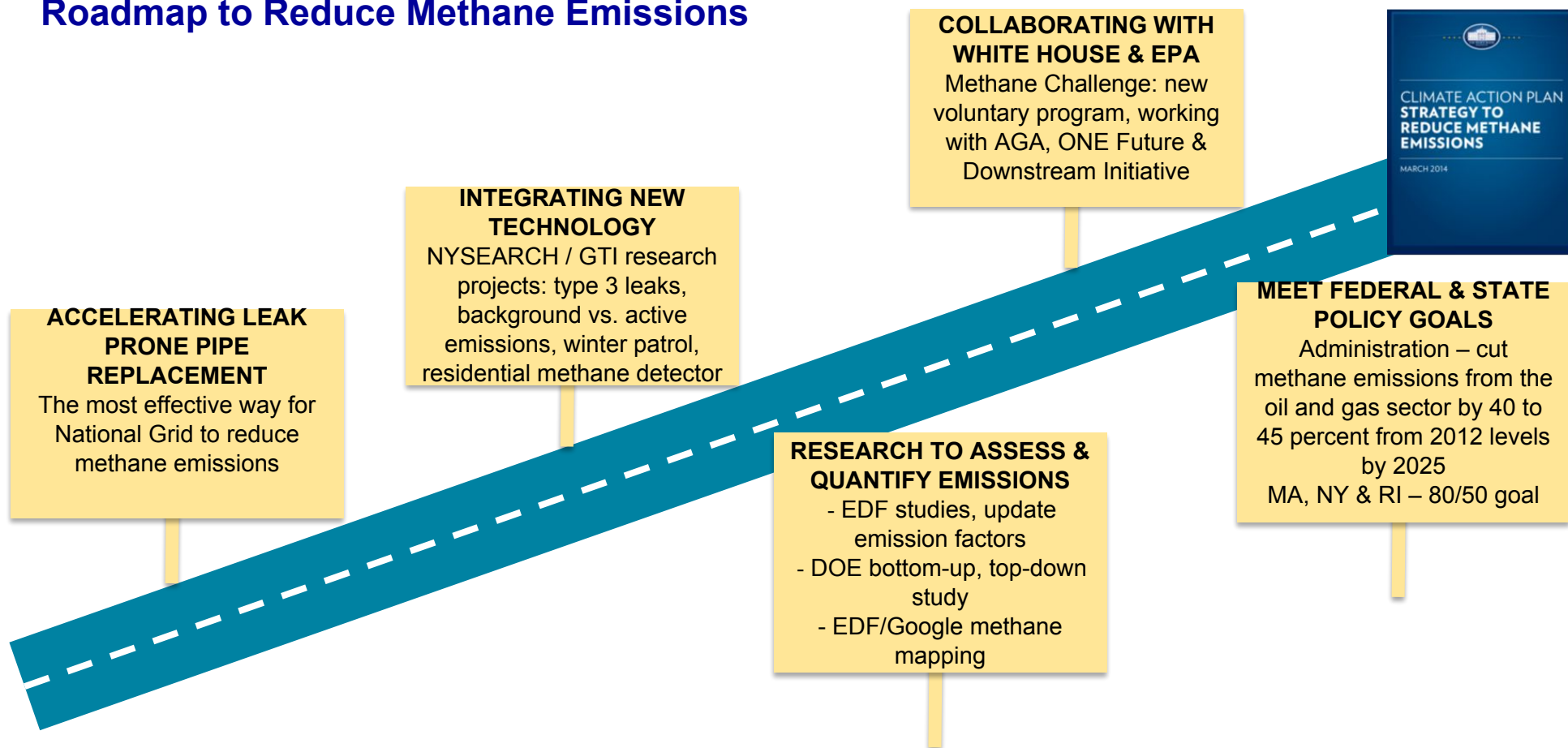


# Reducing Methane Emissions Is an Integral Part of National Grid's Climate Change Strategy – 80/50 Goal

**nationalgrid**

HERE WITH YOU. HERE FOR YOU.

## Roadmap to Reduce Methane Emissions



# Coordination and Communication

- Annual meeting to review gas work plan
- Including projections for the next 3 years
- We are trying to be ahead of your paving plans and public works projects
- Coordination through sharing of public works plan to minimize leaks/reduce new street cuts
- Enhanced communication to town personnel as well as town residents
- Upfront discussion on conditions placed on street opening permits
- Updated National Grid points of contact to discuss issues arising during the construction year